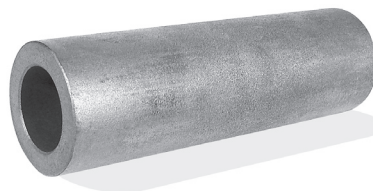
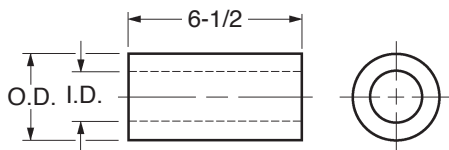




## Sintered Bronze CORED BAR STOCK

• Oil-Impregnated Bronze SAE 841 • Self-Lubricating



Catalog Number	I.D.	O.D.
BSNCOR-SCB0408	1/2	1
BSNCOR-SCB0409		1-1/8
BSNCOR-SCB0410		1-1/4
BSNCOR-SCB0412		1-1/2
BSNCOR-SCB0416		2
BSNCOR-SCB0508	5/8	1
BSNCOR-SCB0509		1-1/8
BSNCOR-SCB0510		1-1/4
BSNCOR-SCB0511		1-3/8
BSNCOR-SCB0512		1-1/2
BSNCOR-SCB0514	1-3/4	
BSNCOR-SCB0516	2	
BSNCOR-SCB0610	3/4	1-1/4
BSNCOR-SCB0612		1-1/2
BSNCOR-SCB0614		1-3/4
BSNCOR-SCB0616		2
BSNCOR-SCB0618		2-1/4
BSNCOR-SCB0620	2-1/2	
BSNCOR-SCB0622	2-3/4	
BSNCOR-SCB0711	7/8	1-3/8
BSNCOR-SCB0712		1-1/2
BSNCOR-SCB0716		2
BSNCOR-SCB0718		2-1/4
BSNCOR-SCB0812		1
BSNCOR-SCB0813	1-5/8	
BSNCOR-SCB0814	1-3/4	

Catalog Number	I.D.	O.D.
BSNCOR-SCB0816	1	2
BSNCOR-SCB0818		2-1/4
BSNCOR-SCB0820		2-1/2
BSNCOR-SCB0824		3
BSNCOR-SCB0828		3-1/2
BSNCOR-SCB0832	4	
BSNCOR-SCB0917	1-1/8	2-1/8
BSNCOR-SCB1014	1-1/4	1-3/4
BSNCOR-SCB1016		2
BSNCOR-SCB1018		2-1/4
BSNCOR-SCB1020		2-1/2
BSNCOR-SCB1024		3
BSNCOR-SCB1028	3-1/2	
BSNCOR-SCB1032	4	
BSNCOR-SCB1116	1-3/8	2
BSNCOR-SCB1122		2-3/4
BSNCOR-SCB1216	1-1/2	2
BSNCOR-SCB1218		2-1/4
BSNCOR-SCB1220		2-1/2
BSNCOR-SCB1222		2-3/4
BSNCOR-SCB1224		3
BSNCOR-SCB1228	3-1/2	
BSNCOR-SCB1232	4	

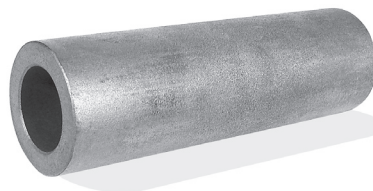
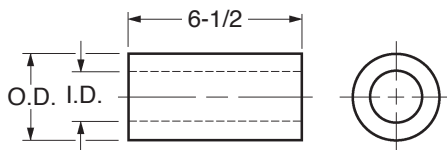
Continued on the next page

**NOTE:** All bars are supplied with oversized O.D.'s and undersized bores so they can be machine finished to dimensions shown.



## Sintered Bronze CORED BAR STOCK

- Oil-Impregnated Bronze SAE 841 • Self-Lubricating



Catalog Number	I.D.	O.D.
BSNCOR-SCB1418	1-3/4	2-1/4
BSNCOR-SCB1420		2-1/2
BSNCOR-SCB1421		2-5/8
BSNCOR-SCB1422		2-3/4
BSNCOR-SCB1424		3
BSNCOR-SCB1428	2	3-1/2
BSNCOR-SCB1434		4-1/4
BSNCOR-SCB1436		4-1/2
BSNCOR-SCB1622		2-3/4
BSNCOR-SCB1624		3
BSNCOR-SCB1626	2	3-1/4
BSNCOR-SCB1632		4
BSNCOR-SCB1636		4-1/2
BSNCOR-SCB1640		5
BSNCOR-SCB1644		5-1/2
BSNCOR-SCB1824	2-1/4	3
BSNCOR-SCB1826		3-1/4
BSNCOR-SCB1828		3-1/2
BSNCOR-SCB1830		3-3/4
BSNCOR-SCB1832		4
BSNCOR-SCB1836	2-3/8	4-1/2
BSNCOR-SCB1924		3
BSNCOR-SCB1928		3-1/2
BSNCOR-SCB1932		4
BSNCOR-SCB1936		4-1/2

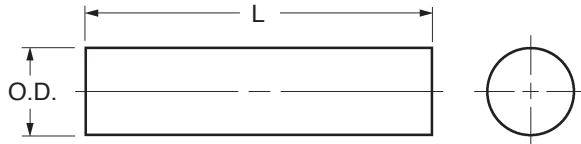
Catalog Number	I.D.	O.D.	
BSNCOR-SCB2028	2-1/2	3-1/2	
BSNCOR-SCB2030		3-3/4	
BSNCOR-SCB2032		4	
BSNCOR-SCB2034		4-1/4	
BSNCOR-SCB2036		4-1/2	
BSNCOR-SCB2040	2-3/4	5	
BSNCOR-SCB2230		3-3/4	
BSNCOR-SCB2430		3	3-3/4
BSNCOR-SCB2432			4
BSNCOR-SCB2436			4-1/2
BSNCOR-SCB2440	5		
BSNCOR-SCB2448	6		
BSNCOR-SCB2634	3-1/4	4-1/4	
BSNCOR-SCB2838	3-1/2	4-3/4	
BSNCOR-SCB2840		5	
BSNCOR-SCB2848		6	
BSNCOR-SCB3040	3-3/4	5	
BSNCOR-SCB3244	4	5-1/2	
BSNCOR-SCB3248		6	
BSNCOR-SCB3256		7	
BSNCOR-SCB3648	4-1/2	6	
BSNCOR-SCB4056	5	7	
BSNCOR-SCB4864	6	8	

**NOTE:** All bars are supplied with oversized O.D.'s and undersized bores so they can be machine finished to dimensions shown.



## Sintered Bronze SOLID BAR STOCK

- Oil-Impregnated Bronze SAE 841 • Self-Lubricating



Catalog Number	O.D.	L Length
BSNBAR-SSB02	1/4	2
BSNBAR-SSB03	3/8	3
BSNBAR-SSB04	1/2	6-1/2
BSNBAR-SSB05	5/8	
BSNBAR-SSB06	3/4	
BSNBAR-SSB07	7/8	
BSNBAR-SSB08	1	
BSNBAR-SSB09	1-1/8	
BSNBAR-SSB10	1-1/4	
BSNBAR-SSB11	1-3/8	
BSNBAR-SSB12	1-1/2	
BSNBAR-SSB13	1-5/8	
BSNBAR-SSB14	1-3/4	
BSNBAR-SSB16	2	
BSNBAR-SSB18	2-1/4	
BSNBAR-SSB20	2-1/2	
BSNBAR-SSB22	2-3/4	
BSNBAR-SSB24	3	
BSNBAR-SSB26	3-1/4	
BSNBAR-SSB28	3-1/2	
BSNBAR-SSB32	4	
BSNBAR-SSB36	4-1/2	
BSNBAR-SSB40	5	
BSNBAR-SSB44	5-1/2	
BSNBAR-SSB48	6	

**NOTE:** All bars are supplied oversized so they can be machine finished to dimensions shown.