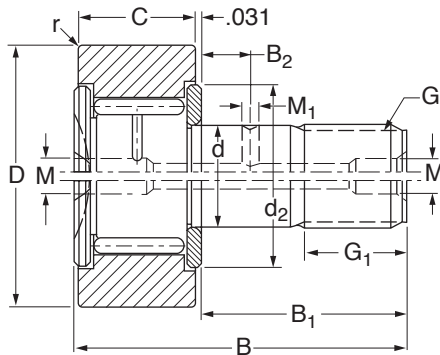




Needle Bearing CAM FOLLOWERS-STUD TYPE

- 52100 Steel
- Cage-Guided
- Full-Complement
- Needle Bearings
- Slotted Head



Materials

ROLLER & NEEDLES	STUD
52100 Steel	1055 Steel

Catalog Number	B ₁ Stud Length	ØD Roller +.0000 -.0010	Ød Stud +.0010 -.0000	C Roller Width +.000 -.005	B Length	G UNF Thread	G ₁ Thread Length	Lubrication Holes		B ₂	r Corner Radius
								ØM	ØM ₁		
BBXCAM-CF12 BBXCAM-CF14	.875	.7500 .8750	.3750	.500	1.406	3/8-24	.375	.188	.125	.250	.020 .039
BBXCAM-CF16 BBXCAM-CF18	1.000	1.0000 1.1250	.4375	.625	1.656	7/16-20	.500	.188	.125	.250	.039
BBXCAM-CF20 BBXCAM-CF22	1.250	1.2500 1.3750	.5000	.750	2.031	1/2-20	.625	.188	.125	.312	.039

Catalog Number	Load Ratings* lbs				Max. Speed** rpm	Stud Housing Diameter		Ød ₂ Clamp. Min.	Max. Clamp. Torque*** lb · in
	C Dyn.	C ₀ Stat.	C _w Dyn.	C _{0w} Stat.		Min.	Max.		
BBXCAM-CF12 BBXCAM-CF14	1830	2900	1140 1120	1650 2220	6000	.3750	.3755	.500	65
BBXCAM-CF16 BBXCAM-CF18	2700	4300	1950 2190	3000 3550	5000	.4375	.4380	.594	105
BBXCAM-CF20 BBXCAM-CF22	4300	6300	3300 3600	4800 5400	4400	.5000	.5005	.750	165

NOTE: All versions available with seals.

To order with seals, add **PP** to the end of catalog number. Example: **BBXCAM-CF16PP**

*The basic load ratings **C** and **C₀** apply if the bearing outer ring (with cylindrical outside surface) is mounted into a housing with standard bearing fit; when used as track roller, the load ratings **C_w** and **C_{0w}** apply.

**Maximum speeds shown are for grease lubrication. With oil lubrication, the speed can be increased by approximately 30% except for sealed versions.

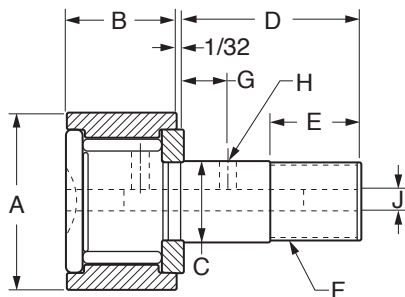
***Clamping torque is based on lubricated threads. If threads are dry, double the values shown.



NEW

**Needle Bearing
CAM FOLLOWERS-SEALED**

- High-Carbon Steel Through-Hardened and Ground Outer Race
- Low-Carbon Alloy Steel Hardened Studs and Inner Races



Catalog Number	Nom. I.D.	Roller		Stud			Lubrication			
		A O.D +.000 -.001	B Width +.000 -.005	ØC +.001 -.000	D Length ±.010	E Min. Eff. Thread Length ±.030	F Thread Class 2A	G Oil Hole Center	ØH Oil Hole	J Lube Fitting Size
BBXCAM-CN16 □	1/2	.500	.375	.190	.625	.250	#10-32	—	—	Δ1/8
BBXCAM-CN20 □	5/8	.625	.4375	.250	.750	.312	1/4-28	—	—	Δ1/8
BBXCAM-CN22 □	11/16	.6875	.4375	.250	.750	.312	1/4-28	—	—	Δ1/8
BBXCAM-CN24 □	3/4	.750	.500	.375	.875	.375	3/8-24	1/4	3/32	3/16
BBXCAM-CN28 □	7/8	.875	.500	.375	.875	.375	3/8-24	1/4	3/32	3/16
BBXCAM-CN32 □	1	1.000	.625	.4375	1.000	.500	7/16-20	1/4	3/32	3/16
BBXCAM-CN36 □	1-1/8	1.125	.625	.4375	1.000	.500	7/16-20	1/4	3/32	3/16
BBXCAM-CN40 □	1-1/4	1.250	.750	.500	1.250	.625	1/2-20	5/16	3/32	3/16
BBXCAM-CN44 □	1-3/8	1.375	.750	.500	1.250	.625	1/2-20	5/16	3/32	3/16
BBXCAM-CN48 □	1-1/2	1.500	.875	.625	1.500	.750	5/8-18	3/8	3/32	3/16
BBXCAM-CN52 □	1-5/8	1.625	.875	.625	1.500	.750	5/8-18	3/8	3/32	3/16

Catalog Number	Other Specs.				
	Min. Boss Dia.	Recom. Bore +.0005 -.0000	Recom.* Torque lb. in.	Max. Static Capacity lbs.	Basic Dyn. Rating lbs.
BBXCAM-CN16 □	19/64	.1900	15	1085	930
BBXCAM-CN20 □	23/64	.2500	35	1215	955
BBXCAM-CN22 □	23/64	.2500	35	1215	955
BBXCAM-CN24 □	1/2	.3750	95	2065	1660
BBXCAM-CN28 □	1/2	.3750	95	2065	1660
BBXCAM-CN32 □	5/8	.4375	250	3060	2225
BBXCAM-CN36 □	5/8	.4375	250	3060	2225
BBXCAM-CN40 □	3/4	.5000	350	4250	3930
BBXCAM-CN44 □	3/4	.5000	350	4250	3930
BBXCAM-CN48 □	57/64	.6250	650	5640	4840
BBXCAM-CN52 □	57/64	.6250	650	5640	4840

Continued on the next page

HEAD:
S Slotted
H Hex

NOTE: ΔRelubricate through head end only.

*Clamping torque is based on dry threads. If threads are lubricated, use half of values shown.

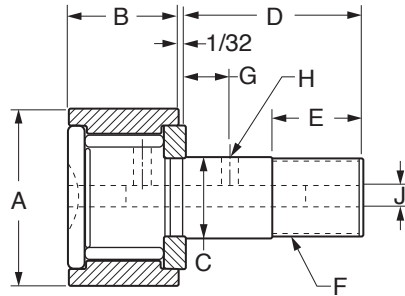


NEW

Needle Bearing

CAM FOLLOWERS-SEALED

- High-Carbon Steel Through-Hardened and Ground Outer Race
- Low-Carbon Alloy Steel Hardened Studs and Inner Races



Catalog Number	Nom. I.D.	Roller		Stud			Lubrication			
		A O.D. +0.000 -0.001	B Width +0.000 -0.005	ØC +0.001 -0.000	D Length ±.010	E Min. Eff. Thread Length ±.030	F Thread Class 2A	G Oil Hole Center	ØH Oil Hole	J Lube Fitting Size
BBXCAM-CN56 <input type="checkbox"/>	1-3/4	1.750	1.000	.750	1.750	.875	3/4-16	7/16	3/32	3/16
BBXCAM-CN60 <input type="checkbox"/>	1-7/8	1.875								
BBXCAM-CN64 <input type="checkbox"/>	2	2.000	1.250	.875	2.000	1.000	7/8-14	1/2	1/8	3/16
BBXCAM-CN72 <input type="checkbox"/>	2-1/4	2.250								
BBXCAM-CN80 <input type="checkbox"/>	2-1/2	2.500	1.500	1.000	2.250	1.125	1-14	9/16	1/8	3/16
BBXCAM-CN88 <input type="checkbox"/>	2-3/4	2.750								
BBXCAM-CN96 <input type="checkbox"/>	3	3.000	1.750	1.250	2.500	1.250	1-1/4-12	5/8	1/8	1/4
BBXCAM-CN104 <input type="checkbox"/>	3-1/4	3.250								
BBXCAM-CN112 <input type="checkbox"/>	3-1/2	3.500	2.000	1.375	2.750	1.375	1-3/8-12	11/16	1/8	1/4
BBXCAM-CN128 <input type="checkbox"/>	4	4.000	2.250	1.500	3.500	1.500	1-1/2-12	3/4	1/8	1/4

Catalog Number	Other Specs.				
	Min. Boss Dia.	Recom. Bore +0.0005 -0.0000	Recom.* Torque lb. in.	Max. Static Capacity lbs.	Basic Dyn. Rating lbs.
BBXCAM-CN56 <input type="checkbox"/>	1-3/64	.7500	1250	7920	6385
BBXCAM-CN60 <input type="checkbox"/>					
BBXCAM-CN64 <input type="checkbox"/>	1-13/64	.8750	1500	10570	8090
BBXCAM-CN72 <input type="checkbox"/>					
BBXCAM-CN80 <input type="checkbox"/>	1-5/16	1.0000	2250	16450	11720
BBXCAM-CN88 <input type="checkbox"/>					
BBXCAM-CN96 <input type="checkbox"/>	1-3/4	1.2500	3450	24910	15720
BBXCAM-CN104 <input type="checkbox"/>					
BBXCAM-CN112 <input type="checkbox"/>	1-59/64	1.3750	4200	31625	22800
BBXCAM-CN128 <input type="checkbox"/>	2-9/32	1.5000	5000	44770	29985

HEAD:
S Slotted
H Hex

*Clamping torque is based on dry threads. If threads are lubricated, use half of values shown.

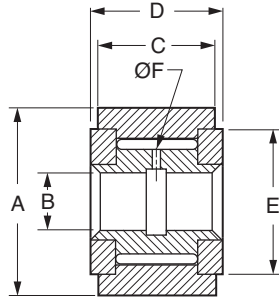


NEW

Needle Bearing

CAM YOKE ROLLERS-SEALED

- High-Carbon Steel Through-Hardened and Ground Outer Race
- Low-Carbon Alloy Steel Induction Hardened Inner Races
- Shafts should be hardened to Rc 58 min.



Catalog Number	Nom. I.D.	A O.D +.000 -.001	B Bore +.0002 -.0004	C Width +.000 -.005	D Overall Width +.005 -.010	E Flange O.D. Ref.	F Oil Hole	Recom. Shaft Dia. ±.0002	Max. Static Load Rating lbs.	Basic Dyn. Load Rating lbs.
BBXCAM-YN24	3/4	.750	.250	.500	.5625	5/8	3/32	.2497	4130	1660
BBXCAM-YN28	7/8	.875								
BBXCAM-YN32	1	1.000	.3125	.625	.6875	23/32	3/32	.3122	6120	2225
BBXCAM-YN36	1-1/8	1.125								
BBXCAM-YN40	1-1/4	1.250	.375	.750	.8125	1	3/32	.3747	8500	3930
BBXCAM-YN44	1-3/8	1.375								
BBXCAM-YN48	1-1/2	1.500	.4375	.875	.9375	1-1/8	3/32	.4372	11280	4840
BBXCAM-YN52	1-5/8	1.625								
BBXCAM-YN56	1-3/4	1.750	.500	1.000	1.0625	1-1/4	3/32	.4997	15840	6385
BBXCAM-YN60	1-7/8	1.875								
BBXCAM-YN64	2	2.000	.625	1.250	1.3125	1-1/2	3/32	.6247	21140	8090
BBXCAM-YN72	2-1/4	2.250								
BBXCAM-YN80	2-1/2	2.500	.750	1.500	1.5625	1-3/4	1/8	.7497	32900	11720
BBXCAM-YN88	2-3/4	2.750								
BBXCAM-YN96	3	3.000	1.000	1.750	1.8125	2-1/4	1/8	.9996	49820	15720
BBXCAM-YN104	3-1/4	3.250								
BBXCAM-YN112	3-1/2	3.500	1.125	2.000	2.0625	2-7/16	1/8	1.1246	63250	22800