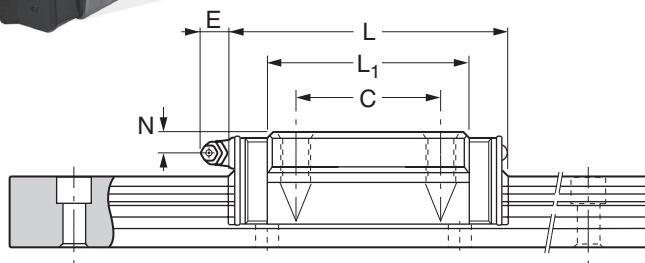
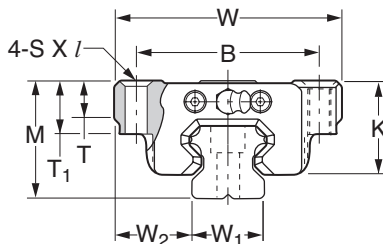


NEW

LINEAR GUIDE BLOCK-STANDARD TYPE

- Tapped Screw Holes • Four-Bolt Type
- Heavy Load and Ultraheavy Load Types



Catalog Number	Outline Dimensions			B	C	S X l	L ₁	W ₁ Width ±0.05	W ₂
	M	W	L						
BBXBLKMHSR15A	24	47	56.5	38	30	M5X11	38.8	15	16
BBXBLKMHSR20A	30	63	74	53	40	M6X10	50.8	20	21.5
BBXBLKMHSR20LA			90				66.8		
BBXBLKMHSR25A	36	70	83	57	45	M8X16	59.5	23	23.5
BBXBLKMHSR25LA			102.5				78.6		
BBXBLKMHSR30A	42	90	98	72	52	M10X18	70.4	28	31
BBXBLKMHSR30LA			120.5				93		
BBXBLKMHSR35A	48	100	109.5	82	62	M10X21	80.4	34	33
BBXBLKMHSR35LA			135				105.8		
BBXBLKMHSR45A	60	120	139	100	80	M12X15	98	45	37.5
BBXBLKMHSR45LA			171				129.6		
BBXBLKMHSR55A	70	140	163	116	95	M14X17	118	53	43.5
BBXBLKMHSR55LA			201				156.1		
BBXBLKMHSR65A	90	170	186	142	110	M16X23	147	63	53.5
BBXBLKMHSR65LA			246				206.5		

Catalog Number	T	T ₁	K	N	E	Basic Load Ratings		Weight Block kg
						C kN	C ₀ kN	
BBXBLKMHSR15A	7	11	20.5	4.5	5.5	8.33	13.5	0.2
BBXBLKMHSR20A	10	10	26	5	12	13.8	23.8	0.35
BBXBLKMHSR20LA						21.3	31.8	0.47
BBXBLKMHSR25A	10	16	30.5	6	12	19.9	34.4	0.59
BBXBLKMHSR25LA						27.2	45.9	0.75
BBXBLKMHSR30A	10	18	35	7	12	28	46.8	1.1
BBXBLKMHSR30LA						37.3	62.5	1.3
BBXBLKMHSR35A	13	21	40	8	12	37.3	61.1	1.6
BBXBLKMHSR35LA						50.2	81.5	2
BBXBLKMHSR45A	14	25	50	10	16	60	95.6	2.8
BBXBLKMHSR45LA						80.4	127	3.3
BBXBLKMHSR55A	15	29	57	11	16	88.5	137	4.5
BBXBLKMHSR55LA						119	183	5.7
BBXBLKMHSR65A	23	37	76	19	16	141	215	8.5
BBXBLKMHSR65LA						192	286	10.7

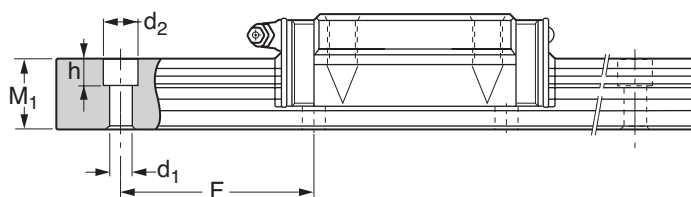
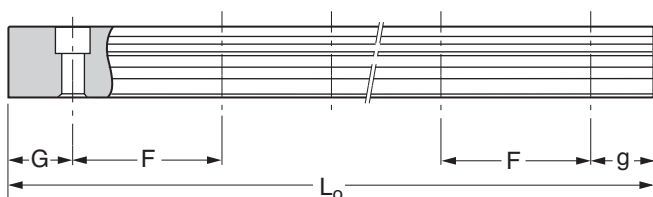
A = Heavy Load
LA = Ultraheavy Load

See page 122 for rail information.

NEW

LINEAR GUIDE RAIL-STANDARD TYPE

• AISI 1055 Steel



Catalog Number	Standard Length (L_0)	G/g	Max. Length	Rail Width ± 0.05	M_1 Height	F Spacing	$d_1 \times d_2 \times h$	Rail Weight kg/m
BBRAILMHSR15	160, 220, 280, 340, 460, 640 & 820	20	1600	15	15	60	4.5 X 7.5 X 5.3	1.5
BBRAILMHSR20	220, 280, 340, 460, 640, 820, 1000 & 1240	20	2200	20	18	60	6 X 9.5 X 8.5	2.3
BBRAILMHSR25	220, 280, 340, 460, 640, 820, 1000, 1240, 1600 & 3000	20	2500	23	22	60	7 X 11 X 9	3.3
BBRAILMHSR30	280, 440, 600, 760, 1000, 1240, 1640, 2040, 2520 & 3000	20	3000	28	26	80	9 X 14 X 12	4.8
BBRAILMHSR35	280, 440, 600, 760, 1000, 1240, 1640, 2040, 2520 & 3000	20	3000	34	29	80	9 X 14 X 12	6.6
BBRAILMHSR45	570, 885, 1200, 1620, 2040, 2460 & 2985	22.5	3000	45	38	105	14 X 20 X 17	11
BBRAILMHSR55	780, 1020, 1260, 1500, 1980, 2580 & 2940	30	3000	53	44	120	16 X 23 X 20	15.1
BBRAILMHSR65	1270, 1570, 2020 & 2620	35	—	63	53	150	18 X 26 X 22	22.5

NOTES: 1. To complete the catalog number, add the standard length (L_0) to the end.
(i.e., for 160mm length **BBRAILMHSR15160**)
2. See page 121 for matching blocks.