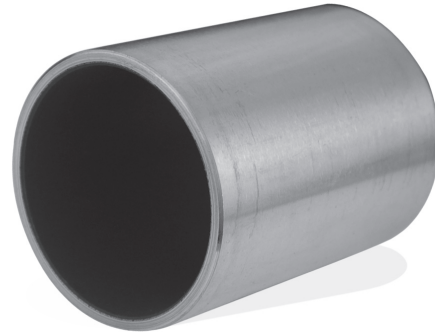
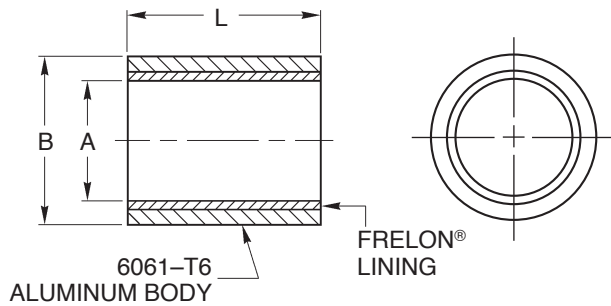




## Frelon® Lined SLEEVE BEARINGS-PLAIN

- Self-Lubricating • Frelon® Liner
- Replaces Sintered and Plastic Bearings



Catalog Number	Nominal Bearing Size			A Bearing I.D.		B Bearing O.D.		L Length		Max. Static Load lbs.	Bearing Weight oz.	Recommended Housing Bore			
	I.D.	O.D.	Length	Min.	Max.	Min.	Max.	Min.	Max.			Min.	Max.	Min.	Max.
BSLPLN-PS03052	3/16	5/16	1/4	.189	.190	.3135	.3145	.230	.250	130	.02	.3145	.3155	.3125	.3130
BSLPLN-PS03054			1/2	.480	.500	272	.04								
BSLPLN-PS04062	1/4	3/8	1/4	.2515	.2525	.376	.377	.230	.250	174	.03	.377	.378	.3750	.3755
BSLPLN-PS04063			3/8	.355	.375	268	.04								
BSLPLN-PS04064			1/2	.480	.500	362	.05								
BSLPLN-PS06104	3/8	5/8	1/2	.3765	.3775	.626	.627	.480	.500	542	.14	.627	.628	.6250	.6255
BSLPLN-PS06106			3/4	.730	.750	824	.20								
BSLPLN-PS07106	7/16	5/8	3/4	.439	.440	.626	.627	.730	.750	962	.23	.627	.628	.6250	.6255
BSLPLN-PS08124	1/2	3/4	1/2	.5015	.5025	.751	.752	.480	.500	722	.15	.752	.753	.7500	.7505
BSLPLN-PS08126			3/4	.730	.750	1098	.25								
BSLPLN-PS08128			1	.980	1.000	1474	.35								
BSLPLN-PS10146			3/4	.730	.750	1372	.30								
BSLPLN-PS10148	5/8	7/8	1	.6265	.6275	.876	.877	.980	1.000	1842	.45	.877	.878	.8750	.8755
BSLPLN-PS12168	3/4	1	1	.7515	.7525	1.001	1.002	.980	1.000	2210	.50	1.002	1.003	.9995	1.0000
BSLPLN-P162012	1	1-1/4	1-1/2	1.0015	1.0025	1.251	1.252	1.480	1.500	4446	.95	1.252	1.253	1.249	1.250
BSLPLN-P202416	1-1/4	1-1/2	2	1.2515	1.2525	1.501	1.502	1.980	2.000	7434	1.55	1.502	1.503	1.499	1.500
BSLPLN-P242816	1-1/2	1-3/4	2	1.5015	1.5025	1.751	1.752	1.980	2.000	8918	1.80	1.752	1.753	1.749	1.750
BSLPLN-P283224	1-3/4	2	3	1.7515	1.7525	2.001	2.002	2.980	3.000	15658	3.15	2.002	2.003	1.999	2.000
BSLPLN-P323624	2	2-1/4	3	2.0015	2.0025	2.251	2.252	2.980	3.000	17894	3.55	2.252	2.253	2.249	2.250
BSLPLN-P404424	2-1/2	2-3/4	3	2.5015	2.5025	2.751	2.752	2.980	3.000	22364	4.85	2.752	2.753	2.749	2.750
BSLPLN-P485228	3	3-1/4	3-1/2	3.0025	3.0025	3.251	3.252	3.480	3.500	31336	6.10	3.252	3.253	3.2485	3.2495

### Installation Instructions:

#### Option 1 – Slip Fit

Slip the bearing sleeve into the housing and epoxy into place with Loctite™ or a similar type of bonding agent.

**CAUTION:** DO NOT let any of the adhesive touch the bearing liner.

It will harden and interfere with the running clearance.

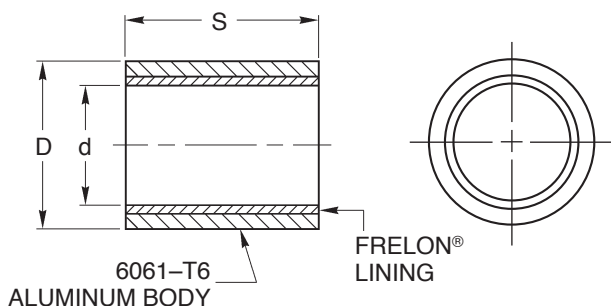
#### Option 2 – Press Fit

Freeze the bearings at 0°F (-17.75°C) for 30–45 minutes. Using gloves, remove from the freezer and slip the bearings into the housing. As they heat to room temperature, full contact between the bearing and housing will be achieved. The greatest advantage to this technique over traditional pressing is greater accuracy in alignment.



## Frelon® Lined SLEEVE BEARINGS-PLAIN

- Self-Lubricating • Frelon® Liner
- Replaces Sintered and Plastic Bearings



Catalog Number	Nominal Bearing Size			d Bearing I.D.		D Bearing O.D. (s7)		S Length		Max. Static Load kg	Bearing Weight kg	Recommended Housing Bore															
	I.D.	O.D.	Length	Min.	Max.	Min.	Max.	Min.	Max.			Slip Fit and Epoxy		Press Fit													
												Min.	Max.	Min.	Max.												
BSLPLNMM061006 BSLPLNMM061010	6	10	6 10	6.028	6.058	10.023	10.038	5.75 9.75	6.00 10.00	76 126	0.00084 0.0014	10.038	10.063	10.000	10.015												
BSLPLNMM081208 BSLPLNMM081212	8	12	8 12	8.033	8.066	12.028	12.046	7.75 11.75	8.00 12.00	134 202	0.0014 0.0021	12.046	12.071	12.000	12.018												
BSLPLNMM081408 BSLPLNMM081412			8 12					7.75 11.75	8.00 12.00	134 202	0.00231 0.00347	14.046	14.071	14.000	14.018												
BSLPLNMM101410 BSLPLNMM101416	10	14	10 16	10.033	10.066	14.028	14.046	9.75 15.75	10.00 16.00	210 336	0.0021 0.00336	14.046	14.071	14.000	14.018												
BSLPLNMM121612 BSLPLNMM121616	12	16	12 16	12.034	12.070	16.028	16.046	11.75 15.75	12.00 16.00	302 404	0.00294 0.00392	16.046	16.071	16.000	16.018												
BSLPLNMM151916	15	19	16	15.034	15.070	19.028	19.046	15.75	16.00	504	0.00476	19.046	19.071	19.000	19.018												
BSLPLNMM162012 BSLPLNMM162016 BSLPLNMM162025	16	20	12 16 25	16.041	16.080	20.035	20.056	11.50 15.50 24.50	12.00 16.00 25.00	404 538 840	0.00378 0.00505 0.00788	20.056	20.081	20.000	20.021												
BSLPLNMM202516 BSLPLNMM202520 BSLPLNMM202525 BSLPLNMM202530			20					25	16 20 25 30	20.042	20.084	25.035	25.056	15.50 19.50 24.50 29.50	16.00 20.00 25.00 30.00	672 840 1050 1260	0.00787 0.00984 0.0123 0.01476	25.056	25.081	25.000	25.021						
BSLPLNMM253020 BSLPLNMM253025 BSLPLNMM253030									25					30	20 25 30	25.042	25.084	30.035	30.056	19.50 24.50 29.50	20.00 25.00 30.00	1050 1312 1576	0.01202 0.01503 0.01803	30.056	30.081	30.000	30.021
BSLPLNMM253525 BSLPLNMM253535	25	35		25 35	25.050	25.096	35.035 35.043								35.068					24.50 34.50	25.00 35.00	1312 1838	0.03276 0.04586	35.068	35.093	35.000	35.021
BSLPLNMM303525 BSLPLNMM303530				30																35	25 30	30.050	30.096	35.043	35.068	24.50 29.50	25.00 30.00
BSLPLNMM304035 BSLPLNMM304050	30	40	35 50		40.043	40.068	49.50	50.00	34.50 49.50	35.00 50.00	2206 3150	0.05349 0.07641	40.068	40.093	40.000	40.025											
BSLPLNMM354525 BSLPLNMM354540 BSLPLNMM354550			35						45	25 40 50	35.052	35.102	45.043	45.068	24.50 39.50 49.50	25.00 40.00 50.00	1838 2940 3676	0.04365 0.06983 0.08729	45.068		45.093					45.000	45.025
BSLPLNMM405030 BSLPLNMM405040	40	50		30 40	40.052	40.102	50.043	50.068		29.50 39.50					30.00 40.00	2520 3360	0.05891 0.07855	50.068	50.093	50.000	50.025						
BSLPLNMM506035 BSLPLNMM506050				50						60					35 50	50.062	50.133	60.053	60.099	34.50 49.50	35.00 50.00	3676 5250	0.08419 0.12027	60.099	60.124	60.000	60.030
BSLPLNMM607060	60	70	60		60.063	60.139	70.053	70.099	59.50		60.00	7560	0.17052	70.099	70.124					70.000	70.030						

### Installation Instructions:

#### Option 1 – Slip Fit

Slip the bearing sleeve into the housing and epoxy into place with Loctite™ or a similar type of bonding agent.

**CAUTION:** DO NOT let any of the adhesive touch the bearing liner. It will harden and interfere with the running clearance.

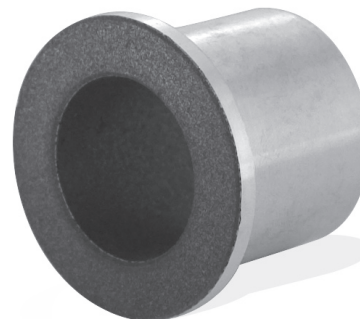
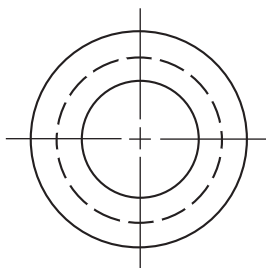
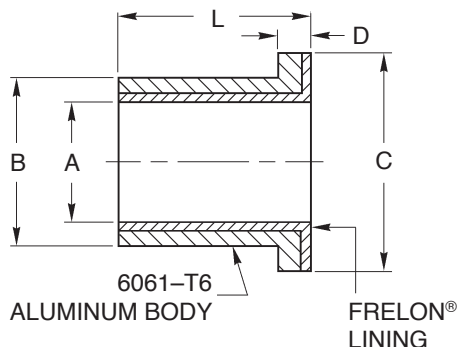
#### Option 2 – Press Fit

Freeze the bearings at 0°F (-17.75°C) for 30–45 minutes. Using gloves, remove from the freezer and slip the bearings into the housing. As they heat to room temperature, full contact between the bearing and housing will be achieved. The greatest advantage to this technique over traditional pressing is greater accuracy in alignment.



## Frelon® Lined SLEEVE BEARINGS-FLANGED

- Self-Lubricating • Frelon® Liner
- Replaces Sintered and Plastic Bearings



Catalog Number	Nominal Bearing Size			A Bearing I.D.		B Bearing O.D.		C Flange O.D.	D Flange Width	L Length		Max. Static Load lbs.	Bearing Weight oz.	Recommended Housing Bore			
	I.D.	O.D.	Length	Min.	Max.	Min.	Max.	Max.	Max.	Min.	Max.			Slip Fit and Epoxy		Press Fit	
														Min.	Max.	Min.	Max.
BSLFLN-PF03052	3/16	5/16	1/4	.1890	.1900	.3135	.3145	.4370	.0625	.230	.250	130	.023	.3145	.3155	.3125	.3130
BSLFLN-PF03054			1/2							.480	.500	272	.044				
BSLFLN-PF04062			1/4							.230	.250	174	.031				
BSLFLN-PF04063	1/4	3/8	3/8	.2515	.2525	.3760	.3770	.5000	.0625	.355	.375	268	.044	.3770	.3780	.3750	.3755
BSLFLN-PF04064			1/2							.480	.500	362	.055				
BSLFLN-PF06104			1/2							.480	.500	542	.200				
BSLFLN-PF06106	3/8	5/8	3/4	.3765	.3775	.6260	.6270	.8750	.1250	.730	.750	824	.250	.6270	.6280	.6250	.6255
BSLFLN-PF07106	7/16	5/8	3/4	.4390	.4400	.6260	.6270	.9375	.1250	.730	.750	962	.200	.6270	.6280	.6250	.6255
BSLFLN-PF08124			1/2							.480	.500	722	.250				
BSLFLN-PF08126	1/2	3/4	3/4	.5015	.5025	.7510	.7520	1.0000	.1250	.730	.750	1098	.300	.7520	.7530	.7500	.7505
BSLFLN-PF08128			1							.980	1.000	1474	.400				
BSLFLN-PF10146			3/4							.730	.750	1372	.350				
BSLFLN-PF10148	5/8	7/8	1	.6265	.6275	.8760	.8770	1.0000	.1250	.980	1.000	1842	.450	.8770	.8780	.8750	.8755
BSLFLN-PF12168	3/4	1	1	.7515	.7525	1.0010	1.0020	1.2500		.980	1.000	2210	.550	1.0020	1.0030	.9995	1.0000
BSLFLN-F162012	1	1-1/4	1-1/2	1.0015	1.0025	1.2510	1.2520	1.5000	.1250	1.480	1.500	4446	1.050	1.2520	1.2530	1.2490	1.2500
BSLFLN-F202416	1-1/4	1-1/2		1.2515	1.2525	1.5010	1.5020	1.7500				7434	1.800	1.5020	1.5030	1.4990	1.5000
BSLFLN-F242816	1-1/2	1-3/4	2	1.5015	1.5025	1.7510	1.7520	2.0000	.1250	1.980	2.000	8918	2.160	1.7520	1.7530	1.7490	1.7500
BSLFLN-F283224	1-3/4	2		1.7515	1.7525	2.0010	2.0020	2.2500				15658	3.300	2.0020	2.0030	1.9990	2.0000
BSLFLN-F323624	2	2-1/4	3	2.0015	2.0025	2.2510	2.2520	2.5000	.1250	2.980	3.000	17894	3.750	2.2520	2.2530	2.2490	2.2500
BSLFLN-F404424	2-1/2	2-3/4		2.5015	2.5025	2.7510	2.7520	3.0000				22364	4.600	2.7520	2.7530	2.7490	2.7500
BSLFLN-F485228	3	3-1/4	3-1/2	3.0015	3.0025	3.2510	3.2520	3.5000	.1250	3.480	3.500	31336	6.300	3.2520	3.2530	3.2485	3.2495

### Installation Instructions:

#### Option 1 – Slip Fit

Slip the bearing sleeve into the housing and epoxy into place with Loctite™ or a similar type of bonding agent.

**CAUTION:** DO NOT let any of the adhesive touch the bearing liner. It will harden and interfere with the running clearance.

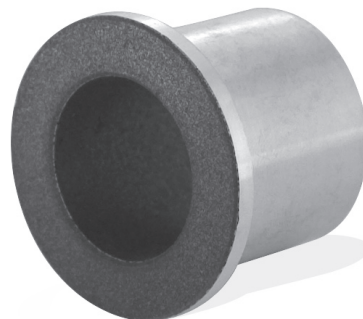
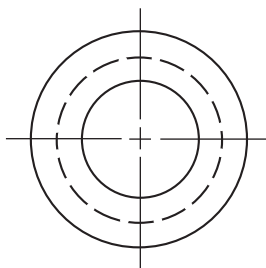
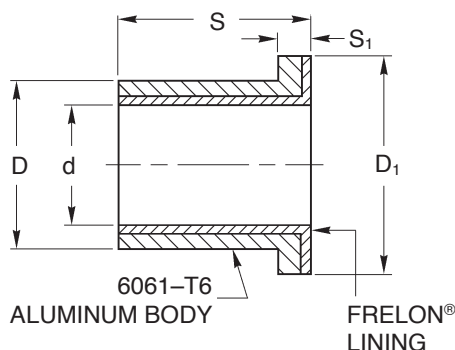
#### Option 2 – Press Fit

Freeze the bearing at 0°F (-17.75°C) for 30–45 minutes. Using gloves, remove from the freezer and slip the bearing into the housing. As it heats to room temperature, full contact between the bearing and housing will be achieved. The greatest advantage to this technique over traditional pressing is greater accuracy in alignment.



## Frelon® Lined SLEEVE BEARINGS-FLANGED

- Self-Lubricating • Frelon® Liner
- Replaces Sintered and Plastic Bearings



Catalog Number	Nominal Bearing Size			d Bearing I.D.		D Bearing O.D.		D <sub>1</sub> Flange O.D.	S <sub>1</sub> Flange Width	S Length		Max. Static Load kg	Bearing Weight kg	Recommended Housing Bore					
	I.D.	O.D.	Length	Min.	Max.	Min.	Max.	Max.	Max.	Min.	Max.			Slip Fit and Epoxy		Press Fit			
														Min.	Max.	Min.	Max.		
BSLFLNMS061006	6	10	6	6.028	6.058	10.023	10.038	14	2	5.75	6.00	76	0.00126	10.038	10.063	10.000	10.015		
BSLFLNMS061010			9.75							10.00	126							0.00182	
BSLFLNMS081206	8	12	6	8.033	8.066	12.028	12.046	16	2	5.75	6.00	100	0.00153	12.046	12.071	12.000	12.018		
BSLFLNMS081208			8							7.75	8.00							134	0.00189
BSLFLNMS081212			12							11.75	12.00							202	0.00259
BSLFLNMS101608	10	16	8	10.033	10.066	16.028	16.046	22	3	7.75	8.00	168	0.00421	16.046	16.071	16.000	16.018		
BSLFLNMS101610			10							9.75	10.00							210	0.00498
BSLFLNMS101616			16							15.75	16.00							336	0.00694
BSLFLNMS121808			8							7.75	8.00							202	0.00478
BSLFLNMS121812	12	18	12	12.034	12.070	18.028	18.046	24	3	11.75	12.00	302	0.00636	18.046	18.071	18.000	18.018		
BSLFLNMS151916			15							15.50	16.00							504	0.00647
BSLFLNMS162016	16	20	16	16.041	16.080	20.035	20.056	27	3	15.50	16.00	538	0.00718	20.056	20.081	20.000	20.021		
BSLFLNMS162020			20							19.50	20.00							672	0.00844
BSLFLNMS162025			25							24.50	25.00							840	0.01002
BSLFLNMS202620			20							19.50	20.00							840	0.01432
BSLFLNMS202630	20	26	30	20.042	20.084	26.035	26.056	32	3	29.50	30.00	1260	0.02035	26.056	26.081	26.000	26.021		
BSLFLNMS253020			20							19.50	20.00							1050	0.01672
BSLFLNMS253025	25	30	25	25.042	25.084	30.035	30.056	39	3.5	24.50	25.00	1312	0.01973	30.056	30.081	30.000	30.021		
BSLFLNMS253032			32							31.50	32.00							1680	0.02394
BSLFLNMS303830			30							29.50	30.00							1890	0.04145
BSLFLNMS354535	35	34.50	35.00	2572	0.07192														
BSLFLNMS405040	40	39.50	40.00	3360	0.09044														
BSLFLNMS506050	50	49.50	50.00	5250	0.13429														

### Installation Instructions:

#### Option 1 – Slip Fit

Slip the bearing sleeve into the housing and epoxy into place with Loctite™ or a similar type of bonding agent.

**CAUTION:** DO NOT let any of the adhesive touch the bearing liner. It will harden and interfere with the running clearance.

#### Option 2 – Press Fit

Freeze the bearing at 0°F (-17.75°C) for 30–45 minutes. Using gloves, remove from the freezer and slip the bearing into the housing. As it heats to room temperature, full contact between the bearing and housing will be achieved. The greatest advantage to this technique over traditional pressing is greater accuracy in alignment.

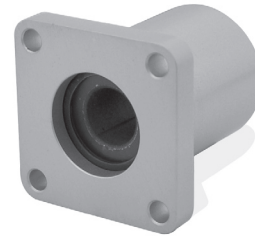
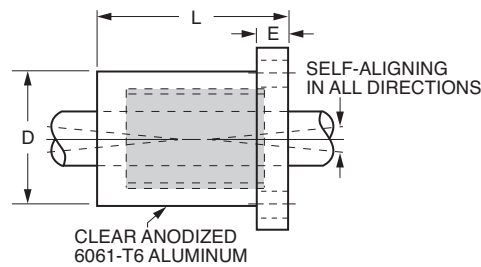
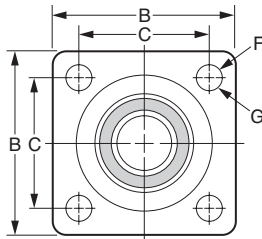


**NEW**

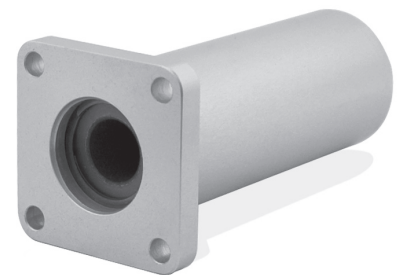
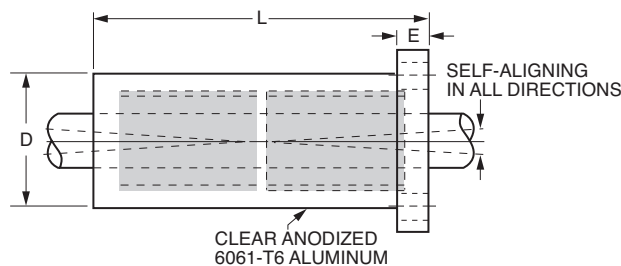
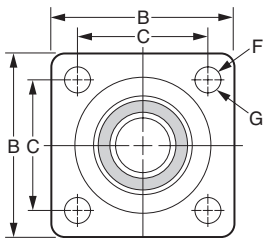
**Frelon® Lined**

**FLANGE-MOUNTED SLEEVE BEARINGS**

- Self-Lubricating
- Frelon® Liner
- 6061-T6 Aluminum Housing
- Self-Aligning



Catalog Number	Bearing Nominal Size	B Flange Square	C Hole Spacing	ØD Barrel	E Flange Length	F Bolt Size	G Hole Size	L Length Overall	Max. Static Load lbs.	Weight lbs.
<b>BLAFMT-SFP08</b>	1/2	1.63	1.25	1.25	.250	#8	.187	1.687	1950	.175
<b>BLAFMT-SFP12</b>	3/4	2.38	1.75	1.75	.375	#10	.219	2.067	2940	.463
<b>BLAFMT-SFP16</b>	1	2.75	2.125	2.25	.500	1/4	.281	2.812	3810	1.206



Catalog Number	Bearing Nominal Size	B Flange Square	C Hole Spacing	ØD Barrel	E Flange Length	F Bolt Size	G Hole Size	L Length Overall	Max. Static Load lbs.	Weight lbs.
<b>BLAFMT-DFP08</b>	1/2	1.63	1.25	1.25	.250	#8	.187	3.375	3900	.325
<b>BLAFMT-DFP12</b>	3/4	2.38	1.75	1.75	.375	#10	.219	4.188	5880	.825
<b>BLAFMT-DFP16</b>	1	2.75	2.125	2.25	.500	1/4	.281	5.625	7620	1.750

**NOTE:** All standard mounted units include a standard self-lubricating bearing **BLAABX-FLX..CP** series found on page 100.