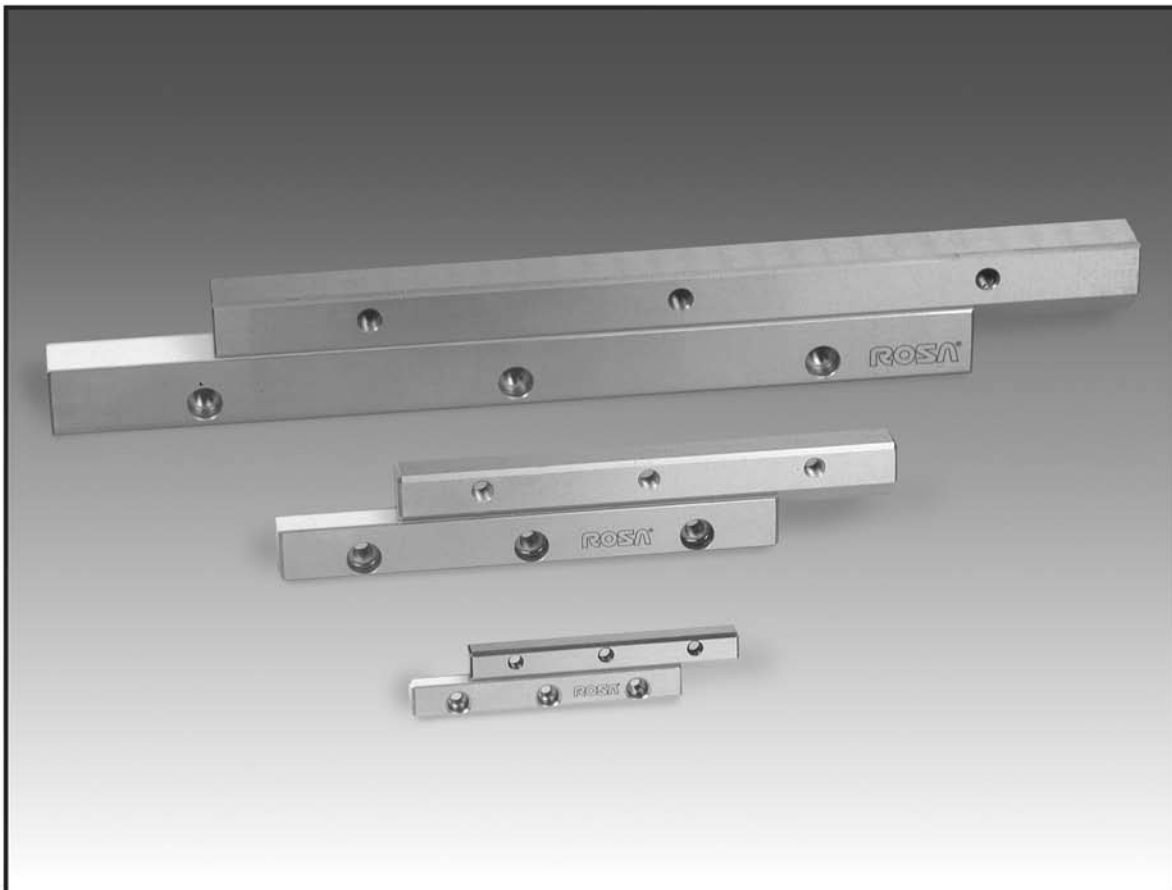
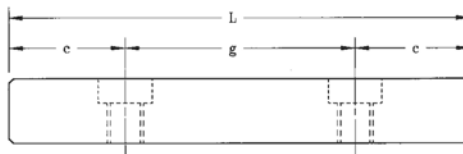
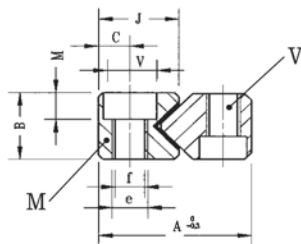


M/V linear guideways have an antifriction material coating and keep identical characteristics than RVA's models (please, see page 278 for load capacity). As for the dimensions are concerned, they replace the guideways GR but clearly improving their stiffness. These dirt-proof units are used above all to exclude any vibration of the system.

Load capacity per unit in cm<sup>2</sup> changes from 4500 N (dynamic) ÷ 7500 N (static).

Rail type	Width of bearing surface
M3	0,3 cm
M6	0,6 cm
M9	1,2 cm
M12	1,6 cm





Denomination	Guideway type	Weight in g (M)	Weight in g (V)	L	g	c	A	B	J	J1	C	e	f	V	M
<b>M/V</b>	3 050	19	25	50	1x25	12,5	18	9	9	10,8	3,5	M4	3,3	6	3,1
	3 075	30	38	75	2x25										
	3 100	41	51	100	3x25										
	3 125	52	64	125	4x25										
	3 150	63	77	150	5x25										
	3 175	74	90	175	6x25										
	3 200	85	103	200	7x25										
	3 225	96	116	225	8x25										
	3 250	107	129	250	9x25										
	3 275	118	142	275	10x25										
3 300	130	155	300	11x25											
<b>M/V</b>	6 100	145	175	100	1x50	25	31	15	16	19,3	6	M6	5,3	10	5,2
	6 150	218	263	150	2x50										
	6 200	290	350	200	3x50										
	6 250	363	438	250	4x50										
	6 300	435	525	300	5x50										
	6 350	508	613	350	6x50										
	6 400	580	700	400	7x50										
	6 450	653	788	450	8x50										
6 500	725	875	500	9x50											
<b>M/V</b>	9 200	640	770	200	1x100	50	44	22	24	28	9	M8	6,8	11	6,2
	9 300	955	1156	300	2x100										
	9 400	1270	1543	400	3x100										
	9 500	1585	1930	500	4x100										
	9 600	1900	2316	600	5x100										
	9 700	2215	2703	700	6x100										
	9 800	2530	3089	800	7x100										
	9 900	2845	3476	900	8x100										
9 1000	3160	3862	1000	9x100											
<b>M/V</b>	12 200	1130	1224	200	1x100	50	58	28	33	35,5	12	M10	8,5	15	8,2
	12 300	1690	1836	300	2x100										
	12 400	2250	2448	400	3x100										
	12 500	2810	3060	500	4x100										
	12 600	3370	3672	600	5x100										
	12 700	3930	4284	700	6x100										
	12 800	4490	4896	800	7x100										
	12 900	5050	5508	900	8x100										
	12 1000	5610	6120	1000	9x100										
	12 1100	6175	6732	1100	10x100										
	12 1200	6740	7244	1200	11x100										