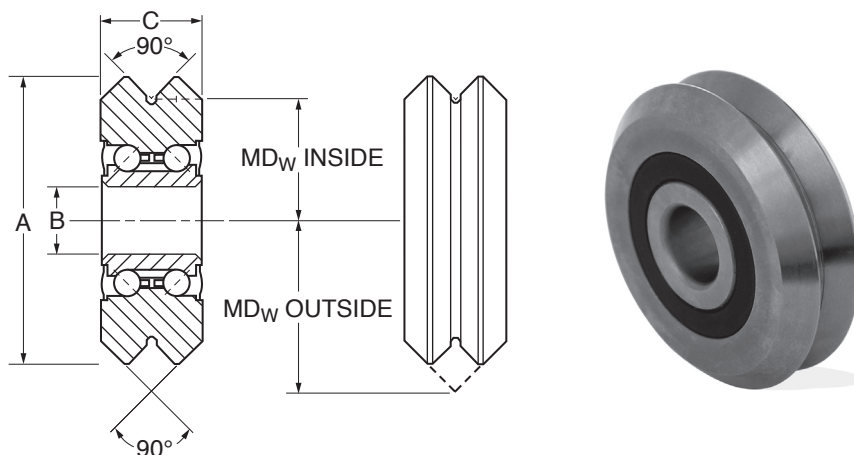




"V" Groove GUIDE WHEELS

• 52100 Chrome Steel • 440C Stainless Steel



AISI 52100 Chrome Steel, Rc 60-62 • Nylon Retainer

Catalog Number	A O.D.	B I.D.	C Width	MD _w INSIDE	MD _w OUTSIDE	Radial Load lbs.	Axial Load lbs.
BGXCOM-0 <input type="checkbox"/>	.584	.1575	.250	.234	.359	146	28
BGXCOM-1 <input type="checkbox"/>	.771	.1875	.310	.313	.468	274	57
BGXCOM-2 <input type="checkbox"/>	1.210	.3750	.438	.500	.719	596	141
BGXCOM-3 <input type="checkbox"/>	1.803	.4724	.625	.750	1.063	1326	382
BGXCOM-4 <input type="checkbox"/>	2.360	.5906	.750	1.000	1.375	2181	900

TYPE:

- X Shielded
- S Sealed

AISI 440C Stainless Steel, Rc 58-60 • 304 Stainless Steel Retainer

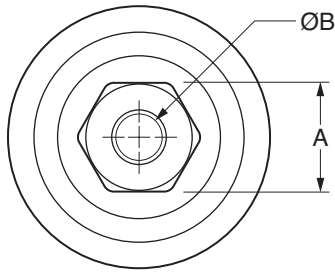
Catalog Number	A O.D.	B I.D.	C Width	MD _w INSIDE	MD _w OUTSIDE	Radial Load lbs.	Axial Load lbs.
BGSCOM-1S	.771	.1875	.310	.313	.468	274	57
BGSCOM-2S	1.210	.3750	.438	.500	.719	596	141
BGSCOM-3S	1.803	.4724	.625	.750	1.063	1326	382
BGSCOM-4S	2.360	.5906	.750	1.000	1.375	2181	900

AISI 440C Wheels only available sealed.

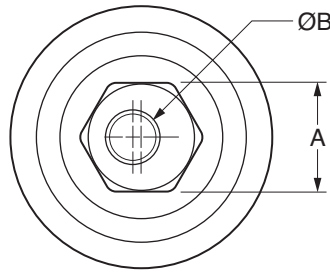


NEW
"V" Groove
INTEGRAL BUSHING-GUIDE WHEELS

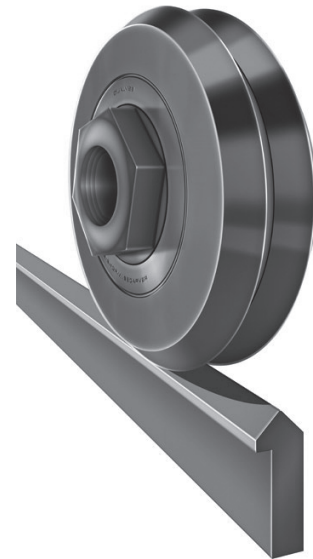
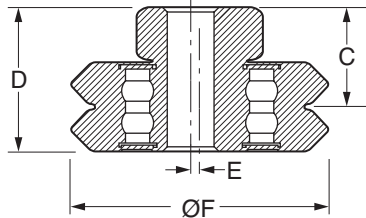
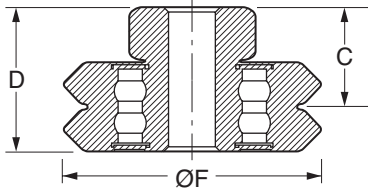
• 52100 Chrome Steel • Nylon Retainer • Shielded Type



CONCENTRIC BUSHING



ECCENTRIC BUSHING



CONCENTRIC TYPE

Catalog Number	A	B	C	D	F	Radial Load N (lbf)	Axial Load N (lbf)
BGXCOMMBWIC2	14	8	9.63	15.19	30.73	2650 (596)	625 (141)
BGXCOMMBWIC3	19	10	13.63	21.56	45.8	5900 (1326)	1701 (382)
BGXCOMMBWIC4	22	12	16.36	25.88	59.94	9700 (2181)	4001 (899)

ECCENTRIC TYPE

Catalog Number	A	B	C	D	E	F	Radial Load N (lbf)	Axial Load N (lbf)
BGXCOMMBWIE2	14	8	9.63	15.19	0.76	30.73	2650 (596)	625 (141)
BGXCOMMBWIE3	19	10	13.63	21.56	1.5	45.8	5900 (1326)	1701 (382)
BGXCOMMBWIE4	22	12	16.36	25.88	2.01	59.94	9700 (2181)	4001 (899)

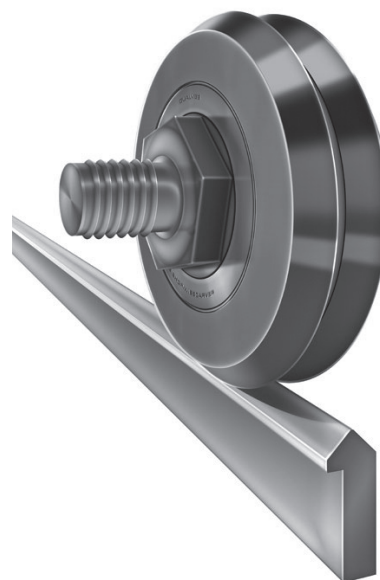


NEW

"V" Groove

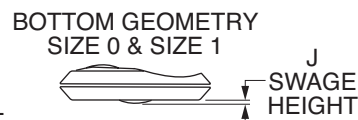
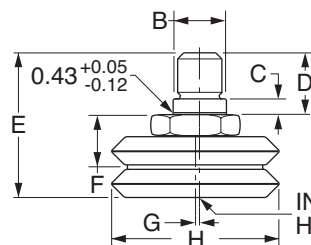
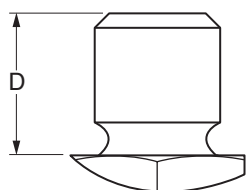
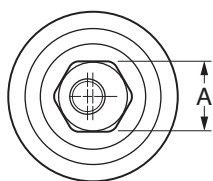
INTEGRAL STUDDED GUIDE WHEELS

- 52100 Chrome Steel • Nylon Retainer • Shielded Type



CONCENTRIC STUD

ECCENTRIC STUD

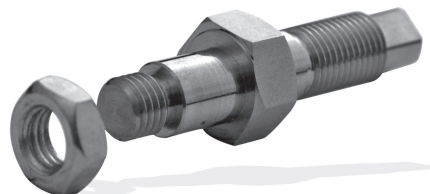
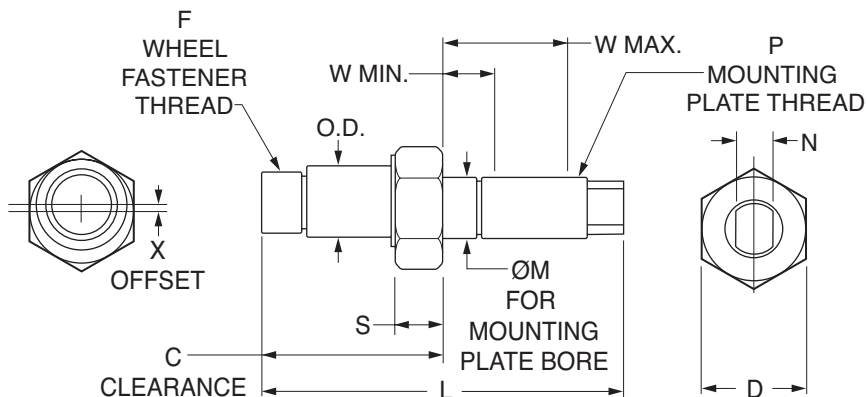


CONCENTRIC TYPE

Catalog Number	A	B	C	D	E	F	G	Stud Thread	H	Internal Hex	J Max.	Load N (lbf)	
												Radial	Axial
BGXCOMMSWIC0	11	5.56	2.16	7.62	16.95	6.15	0.46	M6 X 1	14.83	—	0.43	650 (146)	123 (28)
BGXCOMMSWIC1	12	6.3	2.16	8.1	19.33	7.3	0.61	M8 X 1.25	19.58	—	0.5	1220 (274)	252 (57)
BGXCOMMSWIC2	14	9.53	2.79	11.38	26.57	9.63	0.76	M10 X 1.5	30.73	6	—	2650 (596)	625 (141)
BGXCOMMSWIC3	19	10.72	4.32	15.11	36.68	13.63	1.5	M12 X 1.75	45.8	8	—	5900 (1326)	1701 (382)
BGXCOMMSWIC4	22	12.7	4.5	19	44.89	16.36	2.01	M14 X 2	59.94	10	—	9700 (2181)	4001 (900)

ECCENTRIC TYPE

Catalog Number	A	B	C	D	E	F	G	Stud Thread	H	Internal Hex	J Max.	Load N (lbf)	
												Radial	Axial
BGXCOMMSWIE0	11	5.56	2.16	7.62	16.95	6.15	0.46	M5 X 0.8	14.83	—	0.43	650 (146)	123 (28)
BGXCOMMSWIE1	12	6.3	2.16	8.1	19.33	7.3	0.61	M6 X 1	19.58	—	0.5	1220 (274)	252 (57)
BGXCOMMSWIE2	14	9.53	2.79	11.38	26.57	9.63	0.76	M8 X 1.25	30.73	6	—	2650 (596)	625 (141)
BGXCOMMSWIE3	19	10.72	4.32	15.11	36.68	13.63	1.5	M10 X 1.5	45.8	8	—	5900 (1326)	1701 (382)
BGXCOMMSWIE4	22	12.7	4.5	19	44.89	16.36	2.01	M12 X 1.75	59.94	10	—	9700 (2181)	4001 (900)



Catalog Number	X	S	C	L	O.D. +.0000 -.0007	M +.000 -.002	P	F	N Adjust. Flat Width	D	W Mounting Plate Width	
											Min.	Max.
*BASCOM-BJ0 *BASCOM-BCC0	.010 —	.250	.635	1.38	.1570	.250	1/4-28	8-32	.125	3/8	.125	.375
BASCOM-BJ1 BASCOM-BCC1	.012 —	.250	.695	1.44	.1873	.250	1/4-28	10-32	.125	7/16	.125	.375
BASCOM-BJ2 BASCOM-BCC2	.024 —	.281	.966	2.03	.3748	.375	3/8-24	5/16-24	.250	9/16	.187	.500
BASCOM-BJ3 BASCOM-BCC3	.042 —	.375	1.275	2.53	.4722	.437	7/16-20	7/16-20	.250	3/4	.250	.625
BASCOM-BJ4 BASCOM-BCC4	.060 —	.437	1.537	3.04	.5904	.500	1/2-20	1/2-20	.312	7/8	.375	.750

*O.D. tolerance: for size 0: +.0000, -.0005.

Catalog number with suffix **BJ** indicates eccentric (adjustable) bushing; rotation of eccentric allows fit up adjustment between track and guide wheels.

Catalog number with suffix **BCC** indicates concentric (stationary) journal; since concentrically mounted wheels have a fixed position, these journals set the alignment of the carriage assembly to the rail. Concentrically mounted wheels should be configured to carry the majority of the load whenever possible.



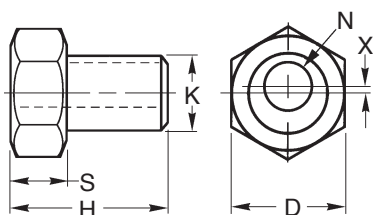
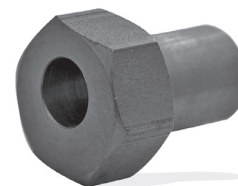
"V" Groove SUPPORT BUSHINGS ECCENTRIC & CONCENTRIC

- Carbon Steel, Electroless Nickel Plated
- 303 Stainless Steel

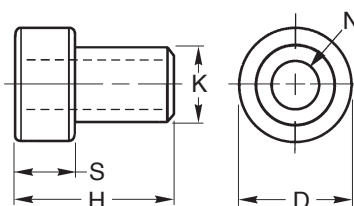
Specifications:

BA = Eccentric bushing. Eccentric mounting hole. By rotating the bushing on its mounting bolt, the clearance between the wheel and track can be adjusted.

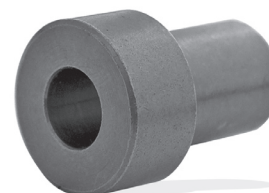
BC = Concentric bushing. Concentric mounting hole. The major load should be carried on the stationary bushing.



ECCENTRIC



CONCENTRIC



Catalog Number		H	S	K*	D	N Dia.	X**	Recommended Fastener Size
Steel	Stainless Steel							
ECCENTRIC BUSHINGS								
BADCOM-BA1	BASCOM-BA1	.550	.250	.1873	.44	.138	.012	#6
BADCOM-BA2	BASCOM-BA2	.706	.281	.3748	.56	.250	.024	1/4
BADCOM-BA3	BASCOM-BA3	.990	.375	.4722	.75	.3125	.042	5/16
BADCOM-BA4	BASCOM-BA4	1.177	.437	.5904	.88	.375	.060	3/8
CONCENTRIC BUSHINGS								
BADCOM-BC1	BASCOM-BC1	.550	.250	.1873	.44	.138	-	#6
BADCOM-BC2	BASCOM-BC2	.706	.281	.3748	.56	.250		1/4
BADCOM-BC3	BASCOM-BC3	.990	.375	.4722	.75	.3125		5/16
BADCOM-BC4	BASCOM-BC4	1.177	.437	.5904	.88	.375		3/8

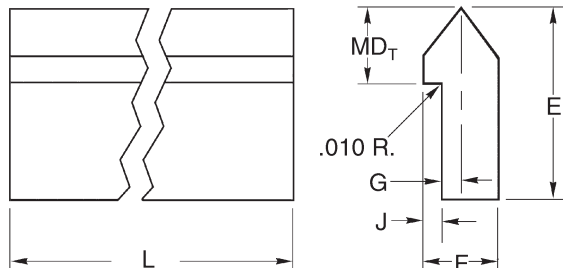
*Fits corresponding wheel bore.

All mounting information assumes a "central" position of the **BA bushing, allowing an adjustment from plus "X" to minus "X".



"V" Groove TRACK-UNDRILLED

- Carbon Steel
- Stainless Steel
- Hardened
- Unhardened
- Single Edge



Catalog Number	L in.	E	F	G	J	MD _T	WT. lbs. / ft.
BK <input type="checkbox"/> COM-T178000X	78	.437	.187	.031	.062	.125	.183
BK <input type="checkbox"/> COM-T278000X		.625	.250	.031	.093	.187	.343
BK <input type="checkbox"/> COM-T378000X		.875	.343	.062	.109	.250	.690
BK <input type="checkbox"/> COM-T478000X		1.062	.437	.093	.125	.312	1.100

MATERIAL:

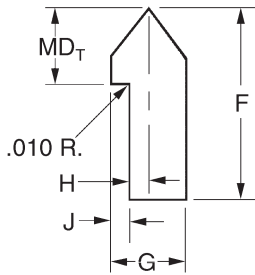
- D** AISI 1045 carbon steel running surface unhardened (Rc 22-25), as formed, oiled
- H** AISI 1045 carbon steel running surface hardened Rc 53, polished and oiled
- S** AISI 420 stainless steel running surface unhardened (Rc 20-22), as formed, oiled
- Y** AISI 420 stainless steel running surface hardened Rc 40, polished and oiled

- NOTES:**
1. Lengths up to 20 feet for hardened, 22 feet for unhardened, are available on special order. Lengths over 10 feet will require a cutting charge.
 2. The portion below indexing shoulder is left soft so it may be drilled for mounting.
 3. Track can be easily butt-jointed for stroke lengths exceeding maximum single-piece lengths of 20 feet plus.
 4. The overall length tolerance is $\pm 1/16"$.

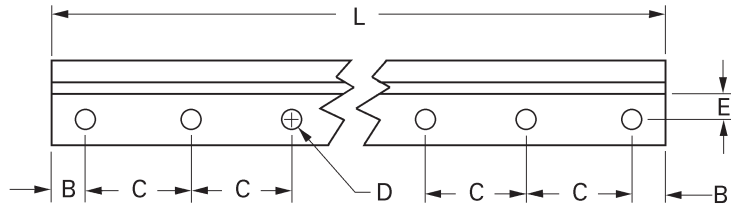


"V" Groove TRACK-PREDRILLED

- Carbon Steel • Stainless Steel
- Hardened • Unhardened
- Single Edge



STANDARD DRILLED TRACK HOLE SPACING AND SIZE



Catalog Number	L ±.015	# of holes	B ±.005	C ±.005	D ±.005	E ±.005	F	G	H	J	MD _T
BK □ COM-T101250D	12.50	7	.250	2.000	.156	.156	.437	.187	.031	.062	.125
BK □ COM-T102450D	24.50	13									
BK □ COM-T103650D	36.50	19									
BK □ COM-T104850D	48.50	25	.310	3.000	.203	.219	.625	.250	.031	.093	.187
BK □ COM-T106050D	60.50	31									
BK □ COM-T107250D	72.50	37									
BK □ COM-T201263D	12.63	5									
BK □ COM-T202463D	24.63	9	.380	3.000	.281	.313	.875	.343	.062	.109	.250
BK □ COM-T203663D	36.63	13									
BK □ COM-T204863D	48.63	17									
BK □ COM-T206063D	60.63	21									
BK □ COM-T207263D	72.63	25	.500	4.000	.344	.375	1.062	.437	.093	.125	.312
BK □ COM-T301275D	12.75	5									
BK □ COM-T302475D	24.75	9									
BK □ COM-T303675D	36.75	13	.500	4.000	.344	.375	1.062	.437	.093	.125	.312
BK □ COM-T304875D	48.75	17									
BK □ COM-T306075D	60.75	21									
BK □ COM-T307275D	72.75	25	.500	4.000	.344	.375	1.062	.437	.093	.125	.312
BK □ COM-T401300D	13.00	4									
BK □ COM-T402500D	25.00	7									
BK □ COM-T403700D	37.00	10	.500	4.000	.344	.375	1.062	.437	.093	.125	.312
BK □ COM-T404900D	49.00	13									
BK □ COM-T406100D	61.00	16									
BK □ COM-T407300D	73.00	19	.500	4.000	.344	.375	1.062	.437	.093	.125	.312
BK □ COM-T404900D	49.00	13									
BK □ COM-T406100D	61.00	16									
BK □ COM-T407300D	73.00	19	.500	4.000	.344	.375	1.062	.437	.093	.125	.312
BK □ COM-T404900D	49.00	13									
BK □ COM-T406100D	61.00	16									

MATERIAL:

- D AISI 1045 carbon steel running surface unhardened (Rc 22-25), as formed, oiled
- H AISI 1045 carbon steel running surface hardened Rc 53, polished and oiled
- S AISI 420 stainless steel running surface unhardened (Rc 20-22), as formed, oiled
- Y AISI 420 stainless steel running surface hardened Rc 40, polished and oiled

NOTE: Track can be easily butt-jointed for stroke lengths exceeding maximum single piece length.