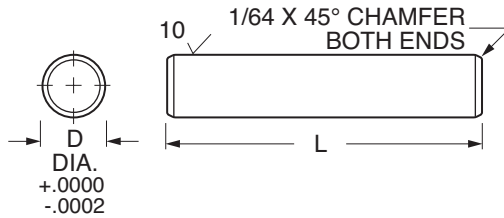




**NEW**  
**303 Stainless Steel**  
**SOLID PRECISION SHAFTING**

- Precision Ground
- Chamfered Ends
- Straightness .0004 Per Inch



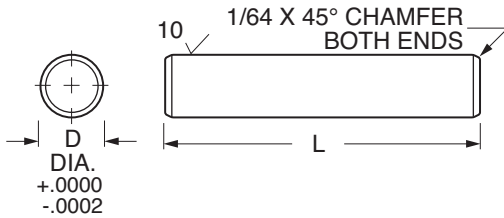
Catalog Number			L Length ±.010
D Diameter .1247	D Diameter .1872	D Diameter .2497	
BBSHAF-04010	BBSHAF-06010	BBSHAF-08010	1
BBSHAF-04011	BBSHAF-06011	BBSHAF-08011	1-1/8
BBSHAF-04012	BBSHAF-06012	BBSHAF-08012	1-1/4
BBSHAF-04013	BBSHAF-06013	BBSHAF-08013	1-3/8
BBSHAF-04015	BBSHAF-06015	BBSHAF-08015	1-1/2
BBSHAF-04016	BBSHAF-06016	BBSHAF-08016	1-5/8
BBSHAF-04017	BBSHAF-06017	BBSHAF-08017	1-3/4
BBSHAF-04018	BBSHAF-06018	BBSHAF-08018	1-7/8
BBSHAF-04020	BBSHAF-06020	BBSHAF-08020	2
BBSHAF-04021	BBSHAF-06021	BBSHAF-08021	2-1/8
BBSHAF-04022	BBSHAF-06022	BBSHAF-08022	2-1/4
BBSHAF-04023	BBSHAF-06023	BBSHAF-08023	2-3/8
BBSHAF-04025	BBSHAF-06025	BBSHAF-08025	2-1/2
BBSHAF-04026	BBSHAF-06026	BBSHAF-08026	2-5/8
BBSHAF-04027	BBSHAF-06027	BBSHAF-08027	2-3/4
BBSHAF-04028	BBSHAF-06028	BBSHAF-08028	2-7/8
BBSHAF-04030	BBSHAF-06030	BBSHAF-08030	3
BBSHAF-04031	BBSHAF-06031	BBSHAF-08031	3-1/8
BBSHAF-04032	BBSHAF-06032	BBSHAF-08032	3-1/4
BBSHAF-04033	BBSHAF-06033	BBSHAF-08033	3-3/8
BBSHAF-04035	BBSHAF-06035	BBSHAF-08035	3-1/2
BBSHAF-04036	BBSHAF-06036	BBSHAF-08036	3-5/8
BBSHAF-04037	BBSHAF-06037	BBSHAF-08037	3-3/4
BBSHAF-04038	BBSHAF-06038	BBSHAF-08038	3-7/8
BBSHAF-04040	BBSHAF-06040	BBSHAF-08040	4
BBSHAF-04041	BBSHAF-06041	BBSHAF-08041	4-1/8
BBSHAF-04042	BBSHAF-06042	BBSHAF-08042	4-1/4
BBSHAF-04043	BBSHAF-06043	BBSHAF-08043	4-3/8
BBSHAF-04045	BBSHAF-06045	BBSHAF-08045	4-1/2
BBSHAF-04046	BBSHAF-06046	BBSHAF-08046	4-5/8
BBSHAF-04047	BBSHAF-06047	BBSHAF-08047	4-3/4
BBSHAF-04048	BBSHAF-06048	BBSHAF-08048	4-7/8

**NOTE:** Grooving, other modifications and sizes available on special order. Continued on the next page



**NEW**  
**303 Stainless Steel**  
**SOLID PRECISION SHAFTING**

- Precision Ground
- Chamfered Ends
- Straightness .0004 Per Inch



Catalog Number			L Length ±.010
D Diameter .1247	D Diameter .1872	D Diameter .2497	
BBSHAF-04050	BBSHAF-06050	BBSHAF-08050	5
BBSHAF-04051	BBSHAF-06051	BBSHAF-08051	5-1/8
BBSHAF-04052	BBSHAF-06052	BBSHAF-08052	5-1/4
BBSHAF-04053	BBSHAF-06053	BBSHAF-08053	5-3/8
BBSHAF-04055	BBSHAF-06055	BBSHAF-08055	5-1/2
BBSHAF-04056	BBSHAF-06056	BBSHAF-08056	5-5/8
BBSHAF-04057	BBSHAF-06057	BBSHAF-08057	5-3/4
BBSHAF-04058	BBSHAF-06058	BBSHAF-08058	5-7/8
BBSHAF-04060	BBSHAF-06060	BBSHAF-08060	6
BBSHAF-04061	BBSHAF-06061	BBSHAF-08061	6-1/8
BBSHAF-04062	BBSHAF-06062	BBSHAF-08062	6-1/4
BBSHAF-04063	BBSHAF-06063	BBSHAF-08063	6-3/8
BBSHAF-04065	BBSHAF-06065	BBSHAF-08065	6-1/2
BBSHAF-04066	BBSHAF-06066	BBSHAF-08066	6-5/8
BBSHAF-04067	BBSHAF-06067	BBSHAF-08067	6-3/4
BBSHAF-04068	BBSHAF-06068	BBSHAF-08068	6-7/8
BBSHAF-04070	BBSHAF-06070	BBSHAF-08070	7
BBSHAF-04071	BBSHAF-06071	BBSHAF-08071	7-1/8
BBSHAF-04072	BBSHAF-06072	BBSHAF-08072	7-1/4
BBSHAF-04073	BBSHAF-06073	BBSHAF-08073	7-3/8
BBSHAF-04075	BBSHAF-06075	BBSHAF-08075	7-1/2
BBSHAF-04076	BBSHAF-06076	BBSHAF-08076	7-5/8
BBSHAF-04077	BBSHAF-06077	BBSHAF-08077	7-3/4
BBSHAF-04078	BBSHAF-06078	BBSHAF-08078	7-7/8
BBSHAF-04080	BBSHAF-06080	BBSHAF-08080	8
BBSHAF-04081	BBSHAF-06081	BBSHAF-08081	8-1/8
BBSHAF-04082	BBSHAF-06082	BBSHAF-08082	8-1/4
BBSHAF-04083	BBSHAF-06083	BBSHAF-08083	8-3/8
BBSHAF-04085	BBSHAF-06085	BBSHAF-08085	8-1/2
BBSHAF-04086	BBSHAF-06086	BBSHAF-08086	8-5/8
BBSHAF-04087	BBSHAF-06087	BBSHAF-08087	8-3/4
BBSHAF-04088	BBSHAF-06088	BBSHAF-08088	8-7/8

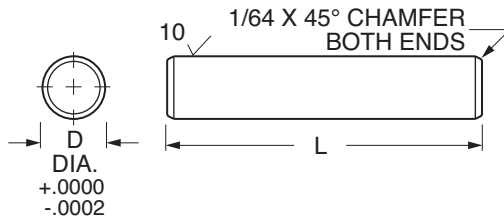
**NOTE:** Grooving, other modifications and sizes available on special order. Continued on the next page



**NEW**

**303 Stainless Steel  
SOLID PRECISION SHAFTING**

- Precision Ground
- Chamfered Ends
- Straightness .0004 Per Inch



Catalog Number			L Length ±.010
D Diameter .1247	D Diameter .1872	D Diameter .2497	
BBSHAF-04090	BBSHAF-06090	BBSHAF-08090	9
BBSHAF-04091	BBSHAF-06091	BBSHAF-08091	9-1/8
BBSHAF-04092	BBSHAF-06092	BBSHAF-08092	9-1/4
BBSHAF-04093	BBSHAF-06093	BBSHAF-08093	9-3/8
BBSHAF-04095	BBSHAF-06095	BBSHAF-08095	9-1/2
BBSHAF-04096	BBSHAF-06096	BBSHAF-08096	9-5/8
BBSHAF-04097	BBSHAF-06097	BBSHAF-08097	9-3/4
BBSHAF-04098	BBSHAF-06098	BBSHAF-08098	9-7/8
BBSHAF-04100	BBSHAF-06100	BBSHAF-08100	10
BBSHAF-04101	BBSHAF-06101	BBSHAF-08101	10-1/8
BBSHAF-04102	BBSHAF-06102	BBSHAF-08102	10-1/4
BBSHAF-04103	BBSHAF-06103	BBSHAF-08103	10-3/8
BBSHAF-04105	BBSHAF-06105	BBSHAF-08105	10-1/2
BBSHAF-04106	BBSHAF-06106	BBSHAF-08106	10-5/8
BBSHAF-04107	BBSHAF-06107	BBSHAF-08107	10-3/4
BBSHAF-04108	BBSHAF-06108	BBSHAF-08108	10-7/8
BBSHAF-04110	BBSHAF-06110	BBSHAF-08110	11
BBSHAF-04111	BBSHAF-06111	BBSHAF-08111	11-1/8
BBSHAF-04112	BBSHAF-06112	BBSHAF-08112	11-1/4
BBSHAF-04113	BBSHAF-06113	BBSHAF-08113	11-3/8
BBSHAF-04115	BBSHAF-06115	BBSHAF-08115	11-1/2
BBSHAF-04116	BBSHAF-06116	BBSHAF-08116	11-5/8
BBSHAF-04117	BBSHAF-06117	BBSHAF-08117	11-3/4
BBSHAF-04118	BBSHAF-06118	BBSHAF-08118	11-7/8
BBSHAF-04120	BBSHAF-06120	BBSHAF-08120	12
BBSHAF-04121	BBSHAF-06121	BBSHAF-08121	12-1/8
BBSHAF-04122	BBSHAF-06122	BBSHAF-08122	12-1/4
BBSHAF-04123	BBSHAF-06123	BBSHAF-08123	12-3/8
BBSHAF-04125	BBSHAF-06125	BBSHAF-08125	12-1/2
BBSHAF-04126	BBSHAF-06126	BBSHAF-08126	12-5/8
BBSHAF-04127	BBSHAF-06127	BBSHAF-08127	12-3/4
BBSHAF-04128	BBSHAF-06128	BBSHAF-08128	12-7/8

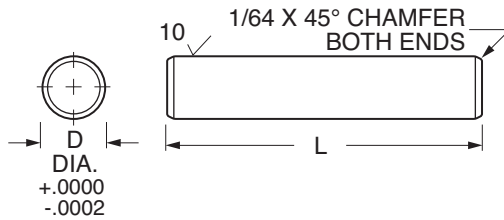
**NOTE:** Grooving, other modifications and sizes available on special order. Continued on the next page



**NEW**

**303 Stainless Steel  
SOLID PRECISION SHAFTING**

- Precision Ground
- Chamfered Ends
- Straightness .0004 Per Inch



Catalog Number			L Length ±.010
D Diameter .1247	D Diameter .1872	D Diameter .2497	
BBSHAF-04130	BBSHAF-06130	BBSHAF-08130	13
BBSHAF-04131	BBSHAF-06131	BBSHAF-08131	13-1/8
BBSHAF-04132	BBSHAF-06132	BBSHAF-08132	13-1/4
BBSHAF-04133	BBSHAF-06133	BBSHAF-08133	13-3/8
BBSHAF-04135	BBSHAF-06135	BBSHAF-08135	13-1/2
BBSHAF-04136	BBSHAF-06136	BBSHAF-08136	13-5/8
BBSHAF-04137	BBSHAF-06137	BBSHAF-08137	13-3/4
BBSHAF-04138	BBSHAF-06138	BBSHAF-08138	13-7/8
BBSHAF-04140	BBSHAF-06140	BBSHAF-08140	14
BBSHAF-04141	BBSHAF-06141	BBSHAF-08141	14-1/8
BBSHAF-04142	BBSHAF-06142	BBSHAF-08142	14-1/4
BBSHAF-04143	BBSHAF-06143	BBSHAF-08143	14-3/8
BBSHAF-04145	BBSHAF-06145	BBSHAF-08145	14-1/2
BBSHAF-04146	BBSHAF-06146	BBSHAF-08146	14-5/8
BBSHAF-04147	BBSHAF-06147	BBSHAF-08147	14-3/4
BBSHAF-04148	BBSHAF-06148	BBSHAF-08148	14-7/8
BBSHAF-04150	BBSHAF-06150	BBSHAF-08150	15
BBSHAF-04151	BBSHAF-06151	BBSHAF-08151	15-1/8
BBSHAF-04152	BBSHAF-06152	BBSHAF-08152	15-1/4
BBSHAF-04153	BBSHAF-06153	BBSHAF-08153	15-3/8
BBSHAF-04155	BBSHAF-06155	BBSHAF-08155	15-1/2
BBSHAF-04156	BBSHAF-06156	BBSHAF-08156	15-5/8
BBSHAF-04157	BBSHAF-06157	BBSHAF-08157	15-3/4
BBSHAF-04158	BBSHAF-06158	BBSHAF-08158	15-7/8
BBSHAF-04160	BBSHAF-06160	BBSHAF-08160	16
BBSHAF-04161	BBSHAF-06161	BBSHAF-08161	16-1/8
BBSHAF-04162	BBSHAF-06162	BBSHAF-08162	16-1/4
BBSHAF-04163	BBSHAF-06163	BBSHAF-08163	16-3/8
BBSHAF-04165	BBSHAF-06165	BBSHAF-08165	16-1/2
BBSHAF-04166	BBSHAF-06166	BBSHAF-08166	16-5/8
BBSHAF-04167	BBSHAF-06167	BBSHAF-08167	16-3/4
BBSHAF-04168	BBSHAF-06168	BBSHAF-08168	16-7/8

**NOTE:** Grooving, other modifications and sizes available on special order. Continued on the next page

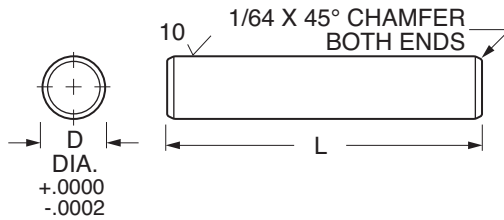


# NEW

## 303 Stainless Steel

### SOLID PRECISION SHAFTING

- Precision Ground
- Chamfered Ends
- Straightness .0004 Per Inch



Catalog Number			L Length ±.010
D Diameter .3122	D Diameter .3747	D Diameter .4997	
BBSHAF-10030	BBSHAF-12030	BBSHAF-16030	3
BBSHAF-10035	BBSHAF-12035	BBSHAF-16035	3-1/2
BBSHAF-10040	BBSHAF-12040	BBSHAF-16040	4
BBSHAF-10045	BBSHAF-12045	BBSHAF-16045	4-1/2
BBSHAF-10050	BBSHAF-12050	BBSHAF-16050	5
BBSHAF-10055	BBSHAF-12055	BBSHAF-16055	5-1/2
BBSHAF-10060	BBSHAF-12060	BBSHAF-16060	6
BBSHAF-10065	BBSHAF-12065	BBSHAF-16065	6-1/2
BBSHAF-10070	BBSHAF-12070	BBSHAF-16070	7
BBSHAF-10075	BBSHAF-12075	BBSHAF-16075	7-1/2
BBSHAF-10080	BBSHAF-12080	BBSHAF-16080	8
BBSHAF-10085	BBSHAF-12085	BBSHAF-16085	8-1/2
BBSHAF-10090	BBSHAF-12090	BBSHAF-16090	9
BBSHAF-10095	BBSHAF-12095	BBSHAF-16095	9-1/2
BBSHAF-10100	BBSHAF-12100	BBSHAF-16100	10
BBSHAF-10120	BBSHAF-12120	BBSHAF-16120	12
BBSHAF-10140	BBSHAF-12140	BBSHAF-16140	14
BBSHAF-10160	BBSHAF-12160	BBSHAF-16160	16
BBSHAF-10180	BBSHAF-12180	BBSHAF-16180	18
BBSHAF-10200	BBSHAF-12200	BBSHAF-16200	20
BBSHAF-10220	BBSHAF-12220	BBSHAF-16220	22
BBSHAF-10240	BBSHAF-12240	BBSHAF-16240	24
BBSHAF-10260	BBSHAF-12260	BBSHAF-16260	26
BBSHAF-10280	BBSHAF-12280	BBSHAF-16280	28
BBSHAF-10300	BBSHAF-12300	BBSHAF-16300	30
BBSHAF-10320	BBSHAF-12320	BBSHAF-16320	32
BBSHAF-10340	BBSHAF-12340	BBSHAF-16340	34
BBSHAF-10360	BBSHAF-12360	BBSHAF-16360	36

**NOTE:** Grooving, other modifications and sizes available on special order.



**NEW**

**Ceramic Coated Aluminum  
SOLID AND PREDRILLED SHAFTING**

- 6105-T6 Aluminum Base Material • Rc 70 Ceramic Coated Finish
- Nonmagnetic and Vibration-Resistant
- Weld Splatter, Paints and Contaminants Will Not Stick

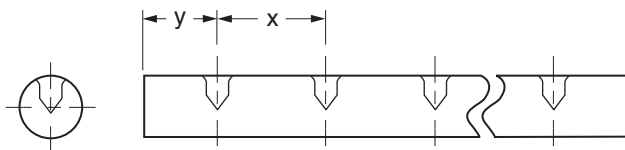


**CERAMIC COATED ALUMINUM SOLID SHAFTING**

Catalog Number	Nominal Shaft O.D.	Diameter Tolerance		Max. Length ft.	Weight Per Inch lbs.
		Min.	Max.		
BBSHAF-CC03-□□	3/16	.1863	.1871	12	.003
BBSHAF-CC04-□□	1/4	.2488	.2496		.005
BBSHAF-CC06-□□	3/8	.3738	.3746	12	.010
BBSHAF-CC08-□□	1/2	.4988	.4996		.019
BBSHAF-CC10-□□	5/8	.6238	.6246	12	.030
BBSHAF-CC12-□□	3/4	.7488	.7496		.043
BBSHAF-CC16-□□	1	.9988	.9996	12	.077
BBSHAF-CC20-□□	1-1/4	1.2488	1.2496		.120
BBSHAF-CC24-□□	1-1/2	1.4987	1.4995	12	.173
BBSHAF-CC32-□□	2	1.9985	1.9995		.308

Specify length in catalog number using inches.  
Example: for 1/2" shafting total length 36" long = **BBSHAF-CC08-36**.

Ends of cut-to-length shafting are not coated.  
Fully coated shafting is available on special request.



**PREDRILLED & TAPPED SHAFTING**

Catalog Number	Nominal Shaft O.D.	Diameter Tolerance		Hole Spacing		Thread	Max. Length ft.	Weight Per Inch lbs.
		Min.	Max.	x	y			
BBSHAF-CPDL08-□□	1/2	.4988	.4996	4	2	#6-32	12	.019
BBSHAF-CPDL10-□□	5/8	.6238	.6246	4	2	#8-32		.030
BBSHAF-CPDL12-□□	3/4	.7488	.7496	6	3	#10-32		.043
BBSHAF-CPDL16-□□	1	.9988	.9996	6	3	1/4-20	12	.077
BBSHAF-CPDL20-□□	1-1/4	1.2488	1.2496	6	3	5/16-18		.120
BBSHAF-CPDL24-□□	1-1/2	1.4987	1.4995	8	4	3/8-16		.173
BBSHAF-CPDL32-□□	2	1.9985	1.9995	8	4	1/2-13		.308

Specify length in catalog number using inches.  
Example: for 1/2" shafting total length 36" long = **BBSHAF-CPDL08-36**.

For non-standard lengths, the "y" dimension will be held to one end. It may not be equal at both ends.

Ends of cut-to-length shafting are not coated.  
Fully coated shafting is available on special request.

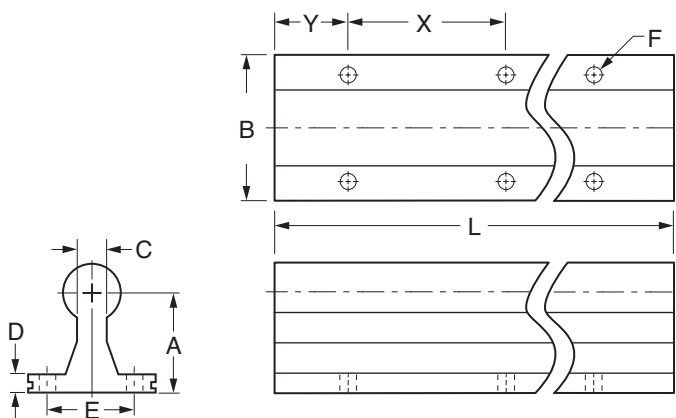
Counterbore .063" from top.



**NEW**

**Ceramic Coated Aluminum  
PREDRILLED, ONE-PIECE SUPPORT RAIL**

- 6105-T6 Aluminum Base Material
- Rc 70 Ceramic Coated Finish
- One-Piece Integrated Design Eliminates Assembly Time
- Weld Splatter, Paints and Other Contaminants Will Not Stick to the Shaft
- Nonmagnetic and Vibration-Resistant
- Economical, Weight-Saving Alternative to Traditional Steel Shafting



Maximum Rail Length: 4 ft.

Catalog Number	Nom. Shaft Size	Diameter Tolerance		A .002	B	C	D	E	F		Hole Spacing		L Standard Lengths in.	Weight Per Inch lbs.
		Min.	Max.						Bolt	Hole	X	Y		
BBSSUP-CCR08-□□	1/2	.4988	.4996	1.125	1.500	.250	.188	1.000	#6	.169	4	2	12, 24, 36, 48	.019
BBSSUP-CCR10-□□	5/8	.6238	.6246	1.125	1.625	.313	.250	1.125	#8	.193	4	2	12, 24, 36, 48	.030
BBSSUP-CCR12-□□	3/4	.7488	.7496	1.500	1.750	.375	.250	1.250	#10	.221	6	3	12, 24, 36, 48	.043
BBSSUP-CCR16-□□	1	.9988	.9996	1.750	2.125	.500	.250	1.500	1/4	.281	6	3	12, 24, 36, 48	.076
BBSSUP-CCR20-□□	1-1/4	1.2488	1.2496	2.125	2.500	.563	.313	1.875	5/16	.343	6	3	12, 24, 36, 48	.119
BBSSUP-CCR24-□□	1-1/2	1.4987	1.4995	2.500	3.000	.688	.375	2.250	5/16	.343	8	4	24, 48	.172
BBSSUP-CCR32-□□	2	1.9985	1.9995	3.250	3.750	.875	.500	2.750	3/8	.406	8	4	24, 48	.305

Specify length in catalog number using inches.

Example: for 1/2" shafting total length 36" long = **BBSSUP-CCR08-36**.

For nonstandard lengths, specify length in catalog number using inches.

Example: for 1/2" shafting total length 30" long = **BBSSUP-CCR08-30**.

All CCR shafting will be cut with bolt pattern centered to utilize maximum number of standard spacings. For all other lengths, the hole pattern will be centered to maximize the number of holes.

Special cut-to-length rails may not be coated on the ends.