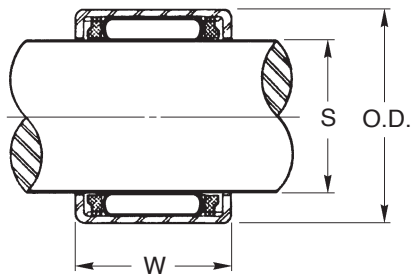
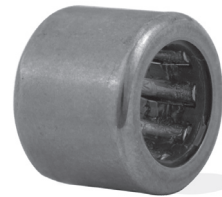




Shell-Type ROLLER CLUTCHES-UNIDIRECTIONAL DRIVE

- Case Hardened Steel Roller Cup
- 52100 Hardened Chrome Steel Needle Bearing

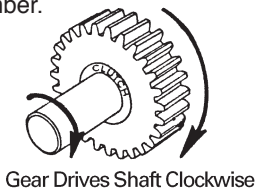


Features:

- Ideal for indexing, backstopping or overrunning operations
- Free rolling one way, drives in opposite direction
- Lightweight, low profile
- High indexing frequency, up to 4 CPS
- Temperature range, grease +50°F to +160°F (+10°C to +70°C)
- Minimum backlash

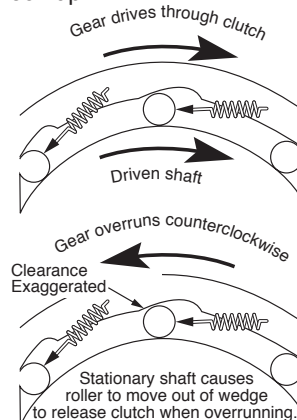
What It Does

Transmits torque load in one direction. Overruns freely in opposite direction. Either shaft or housing can be driving member.



How It Works

Rollers wedge between shaft and outer race. Positive wedging forces prevent slipping. Springs position rollers for instantaneous lock-up.



WITHOUT BEARING SUPPORTS

Catalog Number	Bore	Clutch O.D.	W Clutch Width +.000 -.010	Max. Torque lb. in.	S* Recom- mended Shaft Dia. +.0000 -.0005	Housing Bore +.0010 -.0000	Shaft Rotating Overrun Speed Max. rpm	Housing Rotating Overrun Speed Max. rpm
BCDHFZ-040708	.2500	.4375		18.6	.2500	.4370	21000	12000
BCDHFZ-061008	.3750	.6250	.500	50.4	.3750	.6245	14000	12000
BCDHFZ-081208	.5000	.7500		85.9	.5000	.7495	11000	9000
BCDHFZ-121410	.6250	.8750	.625	175.2	.6250	.8745	8500	5000
BCDHFZ-162110	1.0000	1.3130		442.5	1.0000	1.3120	5300	5000

WITH BEARING SUPPORTS

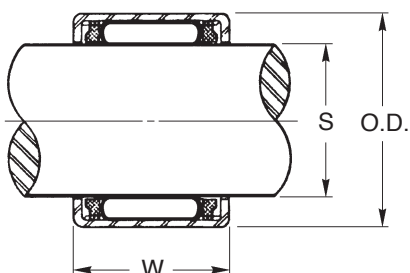
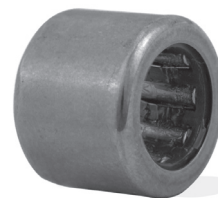
Catalog Number	Bore	Clutch O.D.	W Clutch Width +.000 -.008	Max. Torque lb. in.	S* Recom- mended Shaft Dia. +.0000 -.0005	Housing Bore +.0010 -.0000	Shaft Rotating Overrun Speed Max. rpm	Housing Rotating Overrun Speed Max. rpm
BCDFLZ-061014	.3750	.6250	.875	50.4	.3750	.6245	14000	12000
BCDFLZ-101416	.6250	.8750	1.000	175.2	.6250	.8745	8500	5000

*Shaft surface hardness must be Rc 58 min.

Shell-Type

ROLLER CLUTCHES-UNIDIRECTIONAL DRIVE

- Case Hardened Steel Roller Cup
- 52100 Hardened Chrome Steel Needle Bearing

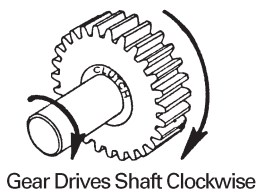


Features:

- Ideal for indexing, backstopping or overrunning operations
- Free rolling one way, drives in opposite direction
- Lightweight, low profile
- High indexing frequency, up to 4 CPS
- Temperature range, grease +10°C to +70°C (+50°F to +160°F)
- Minimum backlash

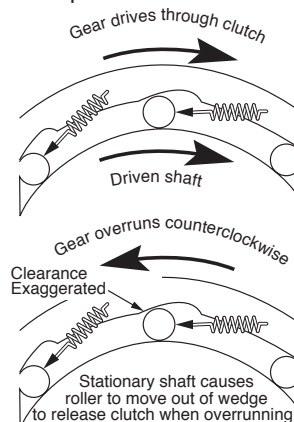
What It Does

Transmits torque load in one direction. Overruns freely in opposite direction. Either shaft or housing can be driving member.



How It Works

Rollers wedge between shaft and outer race. Positive wedging forces prevent slipping. Springs position rollers for instantaneous lock-up.



Catalog Number	Bore	Clutch O.D.	W Clutch Width -0.2	Max. Torque N · m	S* Recommended Shaft Dia. h6	Housing Bore N7 for Steel R7 for Alum.	Shaft Rotating Overrun Speed Max. rpm	Housing Rotating Overrun Speed Max. rpm
BCDHFZM0406	4	8	6	0.34	4	8	34000	8000
BCDHFZM0612	6	10	12	1.76	6	10	23000	13000
BCDHFZM0812	8	12	12	3.15	8	12	17000	12000
BCDHFZM1012	10	14	14	5.3	10	14	14000	11000
BCDHFZM1216	12	18	16	12.2	12	18	11000	8000
BCDHFZM1416	14	20	16	17.3	14	20	9500	8000
BCDHFZM1616	16	22	16	20.5	16	22	8500	7500
BCDHFZM1816	18	24	16	24.1	18	24	7500	7500
BCDHFZM2016	20	26	16	28.5	20	26	7000	6500
BCDHFZM2520	25	32	20	66	25	32	5500	5500
BCDHFZM3020	30	37	20	90	30	37	4500	4500
BCDHFZM3520	35	42	20	121	35	42	3900	3900

*Shaft surface hardness must be HRC 58 min.