

FRICTIONLESS TABLES "TRKD"

The tables TRKD are composed of an upper structure made of aluminium alloy which incorporates two recirculating linear ball bearings. This unit rides on a rail type GRD.

Such an assembly allows for long travel distance, limited only by the rail length. The rail GRD was previously described. It is obvious that the performance of the system is directly related to the type of recirculating linear ball bearing employed.

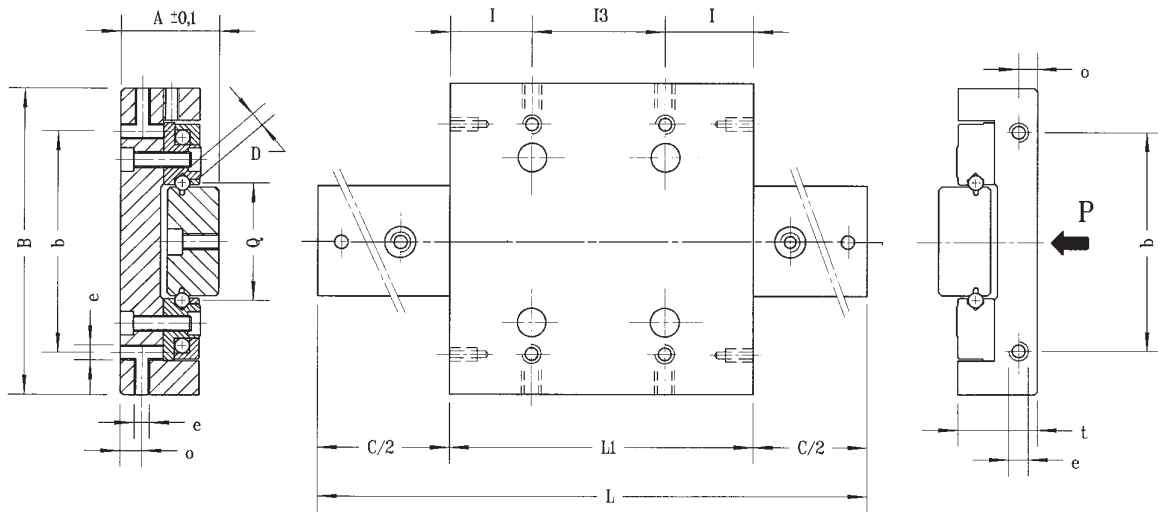
The ratings vary between 850 N and 3300 N and the maximum velocity is 120 m/min.

Max admitted acceleration: 50m/sec²

It is possible to assemble more translating units on the same rail-their height matching can be requested when ordering.



Tables type "TRKD"



| Designation | Stroke C | A | B | L | L ₁ | Q | L _g | D | b | e | I | I ₃ | o | t | Maximum allowable load (N) |
|-------------|----------|------|-----|-----|----------------|----|----------------|---|-----|----|------|----------------|----|------|----------------------------|
| TRKD3 200 | 120 | 22,5 | 70 | 200 | 80 | 28 | 48 | 3 | 53 | M4 | 27,5 | 25 | 5 | 18,5 | 850 |
| TRKD3 300 | 220 | | | | | | | | | | | | | | |
| TRKD3 400 | 320 | | | | | | | | | | | | | | |
| TRKD3 500 | 420 | | | | | | | | | | | | | | |
| TRKD6 200 | 95 | 36 | 120 | 200 | 105 | 45 | 60 | 6 | 86 | M6 | 27,5 | 50 | 8 | 31 | 1430 |
| TRKD6 300 | 195 | | | | | | | | | | | | | | |
| TRKD6 400 | 295 | | | | | | | | | | | | | | |
| TRKD6 500 | 395 | | | | | | | | | | | | | | |
| TRKD6 600 | 495 | | | | | | | | | | | | | | |
| TRKD6 700 | 595 | | | | | | | | | | | | | | |
| TRKD6 800 | 695 | | | | | | | | | | | | | | |
| TRKD6 900 | 795 | | | | | | | | | | | | | | |
| TRKD6 1000 | 895 | | | | | | | | | | | | | | |
| TRKD9 300 | 145 | 49 | 180 | 300 | 155 | 72 | 90 | 9 | 126 | M8 | 27,5 | 100 | 10 | 43 | 3300 |
| TRKD9 400 | 245 | | | | | | | | | | | | | | |
| TRKD9 500 | 345 | | | | | | | | | | | | | | |
| TRKD9 600 | 445 | | | | | | | | | | | | | | |
| TRKD9 700 | 545 | | | | | | | | | | | | | | |
| TRKD9 800 | 645 | | | | | | | | | | | | | | |
| TRKD9 900 | 745 | | | | | | | | | | | | | | |
| TRKD9 1000 | 845 | | | | | | | | | | | | | | |