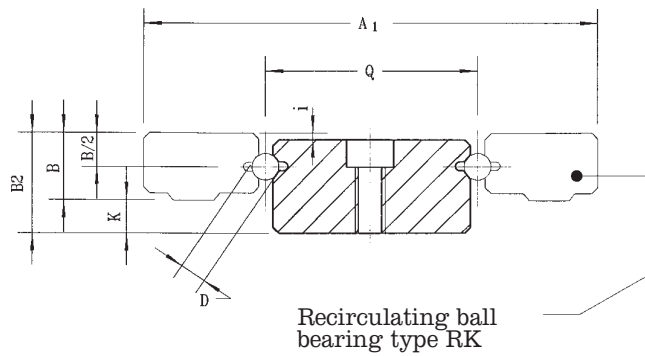
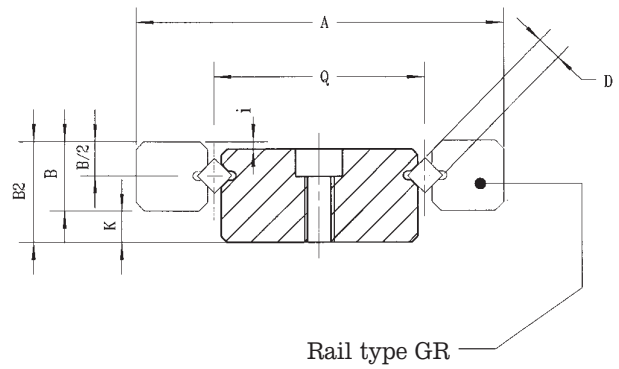


DOUBLE RACEWAY RAILS "GRD"

The rails type "GRD" have been designed to simplify assemblies and to increase structural rigidity. They can be used with the table TR and TRL upper portion to increase the economical benefits. They are an integral component of recirculating systems TRKD.

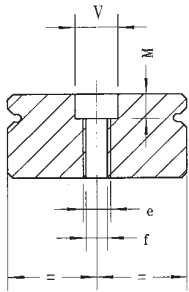


Rails "GRD"

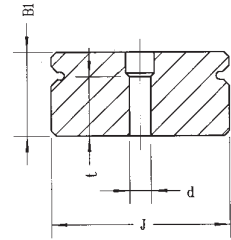
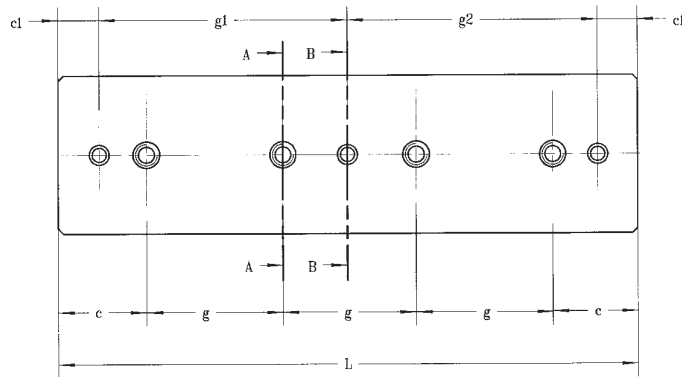


Designation	K	i	D	Q	B ₂	B	A ₁	A
GRD3 200 GRD3 300 GRD3 400 GRD3 500	4	0,5	3	28	12	8	57	46
GRD6 200 GRD6 300 GRD6 400 GRD6 500 GRD6 600 GRD6 700 GRD6 800 GRD6 900 GRD6 1000	5	1	6	45	20	15	94	76
GRD9 300 GRD9 400 GRD9 500 GRD9 600 GRD9 700 GRD9 800 GRD9 900 GRD9 1000	6	1	9	72	28	22	150	116

Rails "GRD"



A - A



B - B

Designation	L	g	c	e	f	V	M	J	B ₁	g ₁	g ₂	c ₁	d	t
GRD3 200	200	3x50								1x175				
GRD3 300	300	5x50	25	M5	4,2	7,5	4,2	26,6	11,5	125	150	12,5	3	6,5
GRD3 400	400	7x50								187,5	187,5			
GRD3 500	500	9x50								225	250			
GRD6 200	200	1x100								1x150				
GRD6 300	300	2x100								1x250				
GRD6 400	400	3x100								175	175			
GRD6 500	500	4x100								210	240			
GRD6 600	600	5x100	50	M6	5,2	9,5	5,2	41,8	19	275	275	25	6	12
GRD6 700	700	6x100								310	340			
GRD6 800	800	7x100								375	375			
GRD6 900	900	8x100								410	440			
GRD6 1000	1000	9x100								475	475			
GRD9 300	300	2x100								1x250				
GRD9 400	400	3x100								175	175			
GRD9 500	500	4x100								210	240			
GRD9 600	600	5x100								275	275			
GRD9 700	700	6x100	50	M8	6,8	10,5	6,2	67,4	27	310	340	25	8	16
GRD9 800	800	7x100								375	375			
GRD9 900	900	8x100								410	440			
GRD9 1000	1000	9x100								475	475			

Rails "GRD"

The rails "GRD" have been designed to eliminate the operations required to prepare the structure on which one normally would mount rails type "GR" (Fig. 20). They help to reduce assembly time and cost. In fact, it is sufficient to provide a ground surface upon which the rail "GRD" is mounted. They could be also used as a mobile portion as depicted in Fig. 21.

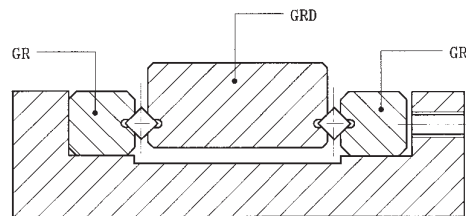
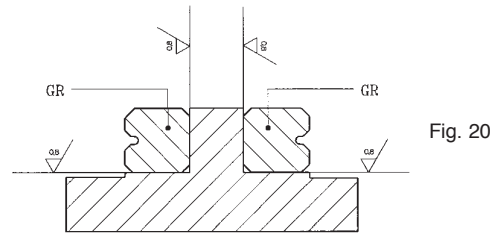
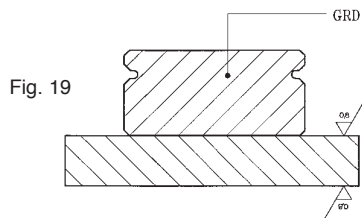


Fig. 21