

Inspection table for rails type GR



Via Quasimodo, 22/24
20025 LEGNANO MI
- ITALY -

TAB 001-1 Rev. 1

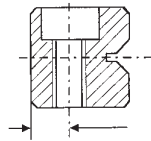
INSPECTION TABLE

rail type: GR

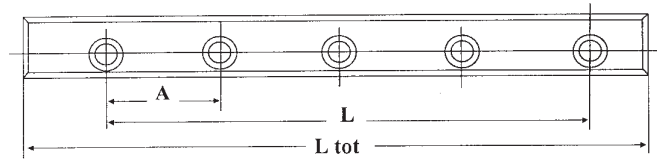
order number:

Date :

Resp. :



	GR
max error (specification)	$\pm 0,2 \text{ mm}$
error (measured)	



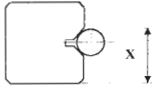
	GR1	GR2	GR3	GR6	GR9	GR12
A	10	15	25	50	100	100
max error (specification)	$\pm 0,3 \text{ mm}$					
error (measured)						
L	L < 350 mm			L > 350 mm		
max error (specification)	$\pm 0,3 \text{ mm}$			$\pm 0,8 \text{ ‰ L}$		
error (measured)						
max error (specification) on rail's length (Ltot)	Ltot < 300 mm $\pm 0,3 \text{ mm}$			Ltot > 300 mm $\pm 1 \text{ ‰ Ltot}$		
error (measured)						

roughness (specification) referred to raceways	0,3 RA
roughness (measured)	
hardness (specification)	60 ± 2 HRC
hardness (measured)	

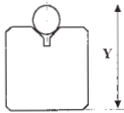
Inspection table for rails type GR



Via Quasimodo, 22/24
20025 LEGNANO MI
- ITALY -

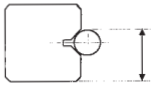


	GR	GR (QS)
max error (specification) X	$\pm 0,005$ mm	$\pm 0,0025$ mm
error (measured)		

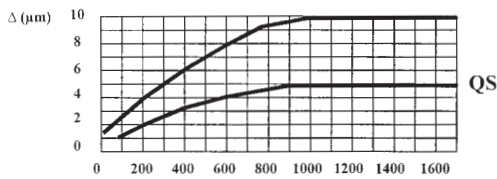


	GR
max error (specification) Y	0 / -0,1 mm
error (measured)	

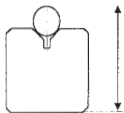
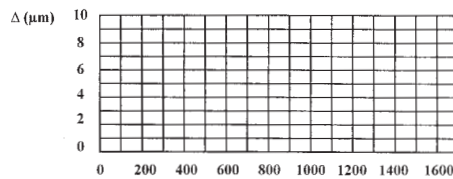
Parallelism variation vs length



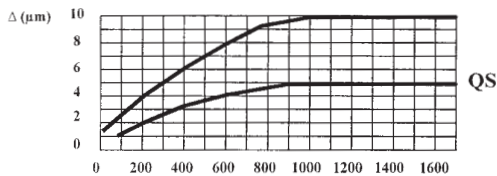
ERROR SPECIFICATION



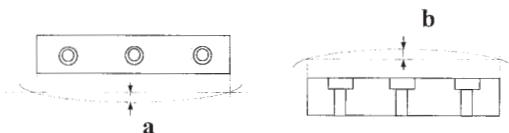
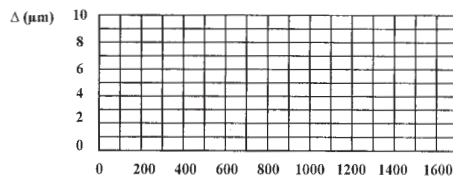
ERROR MEASURED



ERROR SPECIFICATION



ERROR MEASURED



	ADMITTED	MEASURED
arrows (a)		
arrows (b)		

(mm)