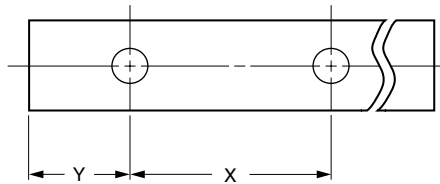


440C Stainless Steel, Predrilled 60 Case™ QUICK™ Shafts with Drilled-and-Tapped Mounting Holes (HRC 50-55)

Catalog Number			
Length in.	Nominal Diameter		
	1/2	5/8	3/4
24	TQSS1/2PDL-24	TQSS5/8PDL-24	TQSS3/4PDL-24
48	TQSS1/2PDL-48	TQSS5/8PDL-48	TQSS3/4PDL-48
72	TQSS1/2PDL-72	TQSS5/8PDL-72	TQSS3/4PDL-72

Catalog Number			
Length in.	Nominal Diameter		
	1	1-1/4	1-1/2
24	TQSS1PDL-24	TQSS1-1/4PDL-24	TQSS1-1/2PDL-24
48	TQSS1PDL-48	TQSS1-1/4PDL-48	TQSS1-1/2PDL-48
72	TQSS1PDL-72	TQSS1-1/4PDL-72	TQSS1-1/2PDL-72

Shaft Diameter	Hole Spacing		Standard Thread Size	Maximum Length inch
	X inch	Y inch		
1/2	4	2	#6-32	166
5/8	4	2	#8-32	178
3/4	6	3	#10-32	178
1	6	3	1/4-20	178
1-1/4	6	3	5/16-18	
1-1/2	8	4	3/8-16	



NOTE: 1. Standard hole spacing (holes are drilled and tapped to center of shaft)
 $X \pm 1/64$ (noncumulative)
 2. Length tolerance $\pm 1/32$

SPECIFICATIONS			
Nominal Diameter	Class "L" O.D. Tolerance	Min. Depth of Hardness	Weight (lbs/inch of length)
1/2	.4995/.4990	.040	.055
5/8	.6245/.6240	.040	.086
3/4	.7495/.7490	.060	.125
1	.9995/.9990	.080	.222
1-1/4	1.2495/1.2490	.080	.348
1-1/2	1.4994/1.4989	.080	.500