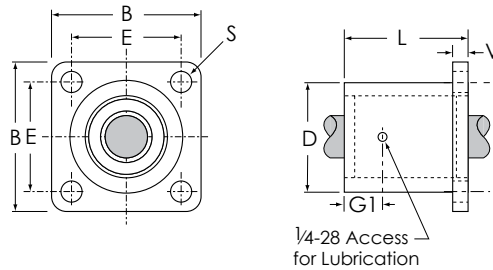


Super Smart Ball Bushing™ Flanged Single and Twin Pillow Blocks

for End-Supported Application

Single Pillow Block

SINGLE PILLOW BLOCKS



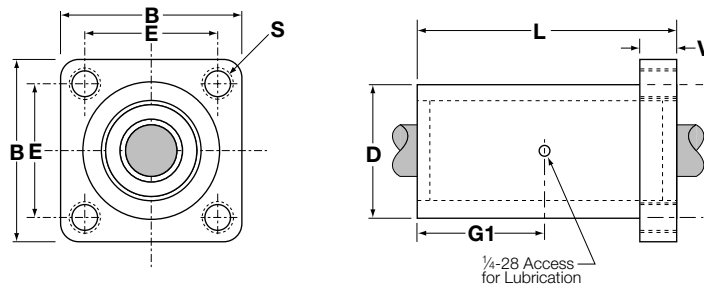
Super Smart Ball Bushing™ Flanged Single Pillow Blocks (Dimensions in inches)										
Catalog Number	Nominal Diameter	B	E ± .010	L	D	V	G1	S Hole Dia.	Pillow Block Mass lb	Dynamic ^A Load Capacity lbf
TSS6UFB-8	.500	1.63	1.250	1.69	1.25	.25	.72	.19	.23	265
TSSUFB-12	.750	2.38	1.750	2.06	1.75	.38	.89	.22	.52	1130
TSSUFB-16	1.000	2.75	2.125	2.81	2.25	.50	1.27	.28	1.04	1900
TSSUFB-20	1.250	3.50	2.750	3.63	3.00	.63	1.67	.35	2.34	2350
TSSUFB-24	1.500	4.00	3.125	4.00	3.62	.75	1.86	.41	3.69	3880

^ASee the chart on the bottom half of the next page.

NOTE: Catalog number is for a standard item.

For other options, add: **CR** Corrosion-Resistant, **NB** Nylon Balls, or **CM** Ceramic Balls to end of catalog number.

Twin Pillow Block



Super Smart Ball Bushing™ Flanged Twin Pillow Blocks (Dimensions in inches)										
Catalog Number	Nominal Diameter	B	E ± .010	L	D	V	G1	S Thread	Pillow Block Mass lb	Dynamic ^A Load Capacity lbf
TSS6UTFB-8	.500	1.63	1.250	3.20	1.25	.90	1.48	1/4-20	.45	530
TSSUTFB-12	.750	2.38	1.750	3.95	1.75	.90	1.98	1/4-20	1.05	2260
TSSUTFB-16	1.000	2.75	2.125	5.33	2.25	.90	2.67	5/16-18	1.95	3800
TSSUTFB-20	1.250	3.50	2.750	6.70	3.00	.90	3.35	5/16-18	4.20	4700
TSSUTFB-24	1.500	4.00	3.125	7.50	3.62	1.00	3.75	3/8-16	6.81	7760

^ASee the chart on the bottom half of the next page.

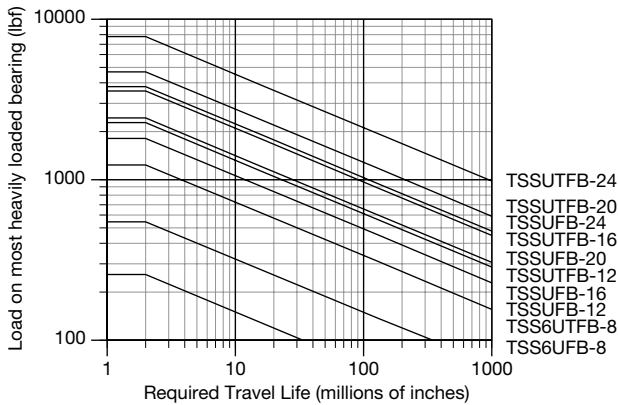
Continued on the next page

NOTE: Catalog number is for a standard item.

For other options, add: **CR** Corrosion-Resistant, **NB** Nylon Balls, or **CM** Ceramic Balls to end of catalog number.

Super Smart Ball Bushing™ Flanged Single and Twin Pillow Blocks for End-Supported Application

Load/Life Graph (Lines indicate limiting load for given BALL BUSHING Pillow Block)



Determining BALL BUSHING Bearing Size

To determine the proper BALL BUSHING bearing size, enter the chart with the maximum load of the most heavily loaded bearing and the required travel life. Mark where the two lines intersect. All BALL BUSHING bearing sizes that pass through or above and to the right of this point may be suitable for this application.

Note: For the purpose of using this chart:

$$\text{Load on Most Heavily Loaded Bearing} = \frac{\text{Maximum Applied Load}}{K_0}$$

where:

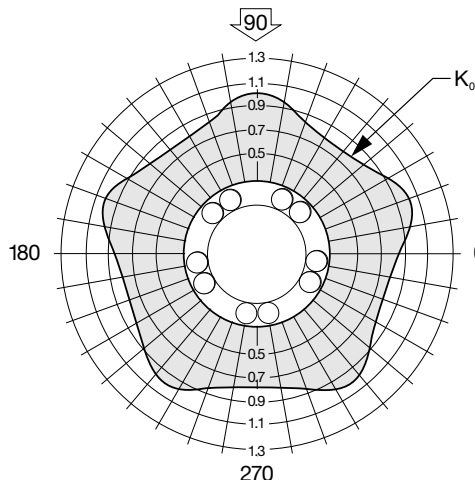
K_0 = the Load Correction Factor, which can be determined from the Polar Graph below.

Dynamic Load Capacity Correction Factor, K_0

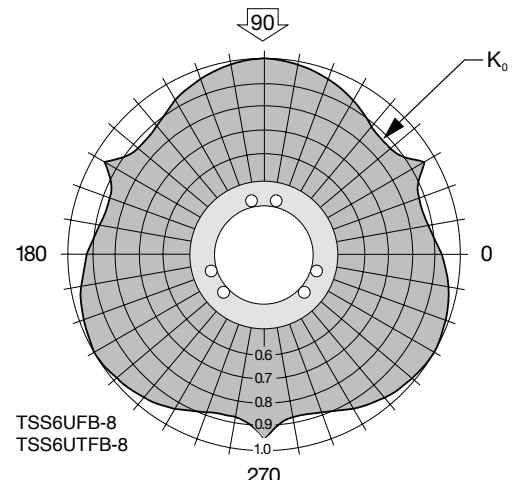
The Dynamic Load Capacity is based on a rated travel life of 2 million inches. The actual Dynamic Load Capacity can be affected by the orientation of the bearing or the direction of the applied load. For dynamic load Correction Factors, see polar graphs below. Dynamic load capacity of Twin Super Smart Flanged Pillow Blocks is based on two bearings equally loaded.

Polar Graphs

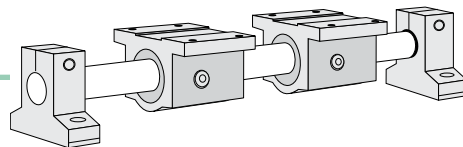
The actual Dynamic Load Capacity of a BALL BUSHING bearing is determined by the orientation of the bearing or direction of the applied load. The load Correction Factor K_0 is found by knowing the direction of the applied load relative to the orientation of the bearing's ball tracks and referring to the polar graph. To determine the actual Dynamic Load Capacity, multiply the proper Correction Factor by the Dynamic Load Capacity listed in the product table on the previous page.



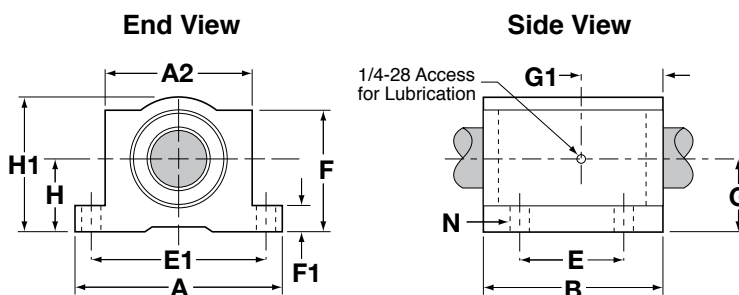
TSSUTFB-24
TSSUTFB-12
TSSUTFB-16
TSSUTFB-20
TSSUTFB-24



TSS6UFB-8
TSS6UTFB-8



Super Smart Ball Bushing™ Pillow Blocks (Closed Type) for End-Supported Applications



Super Smart Ball Bushing™ Pillow Blocks (Closed Type, Seal at Both Ends)
(Dimensions in inches)

Catalog Number	Nominal Diameter	A	A2	B	E ± .010	E1 ± .010	F	F1
TSS6UPB-8	.500	2.00	1.38	1.69	1.000	1.688	1.13	.25
TSSUPB-10	.625	2.50	1.75	1.94	1.125	2.125	1.44	.28
TSSUPB-12	.750	2.75	1.88	2.06	1.250	2.375	1.56	.31
TSSUPB-16	1.000	3.25	2.38	2.81	1.750	2.875	1.94	.38
TSSUPB-20	1.250	4.00	3.00	3.63	2.000	3.500	2.50	.44
TSSUPB-24	1.500	4.75	3.50	4.00	2.500	4.125	2.88	.50

Catalog Number	G	G1	H ± .003	H1	N		Pillow Block Mass lb	Dynamic* Load Capacity lbf
					Hole	Bolt		
TSS6UPB-8	.69	.72	.687	1.25	.16	#6	.23	265
TSSUPB-10	.88	.83	.875	1.63	.19	#8	.51	620
TSSUPB-12	.94	.89	.937	1.75	.19	#8	.62	1130
TSSUPB-16	1.19	1.27	1.187	2.19	.22	#10	1.24	1900
TSSUPB-20	1.50	1.68	1.500	2.81	.22	#10	2.57	2350
TSSUPB-24	1.75	1.86	1.750	3.25	.28	.25	3.94	3880

*See the chart on the bottom half of the next page.

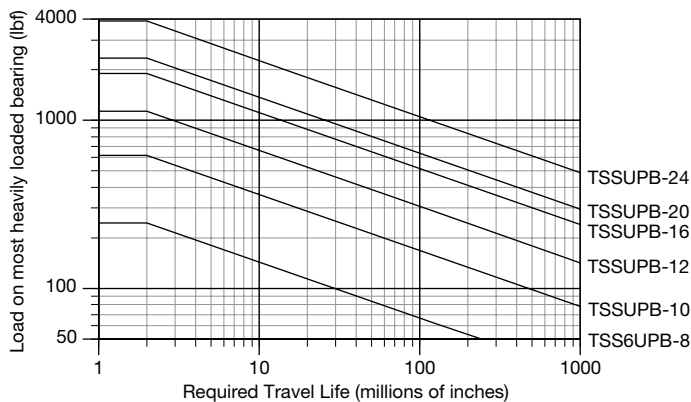
Continued on the next page

NOTE: Catalog number is for a standard item.

For other options, add: **CR** Corrosion-Resistant, **NB** Nylon Balls, or **CM** Ceramic Balls to end of catalog number.

Super Smart Ball Bushing™ Pillow Blocks (Closed Type) for End-Supported Applications

Load/Life Graph (Lines indicate limiting load for given Ball Bushing bearing)



Determining BALL BUSHING Bearing Size

To determine the proper BALL BUSHING bearing size, enter the chart with the maximum load of the most heavily loaded bearing and the required travel life. Mark where the two lines intersect. All BALL BUSHING bearing sizes that pass through or above and to the right of this point may be suitable for this application.

Note: For the purpose of using this chart:

$$\text{Load on Most Heavily Loaded Bearing} = \frac{\text{Maximum Applied Load}}{K_0}$$

where:

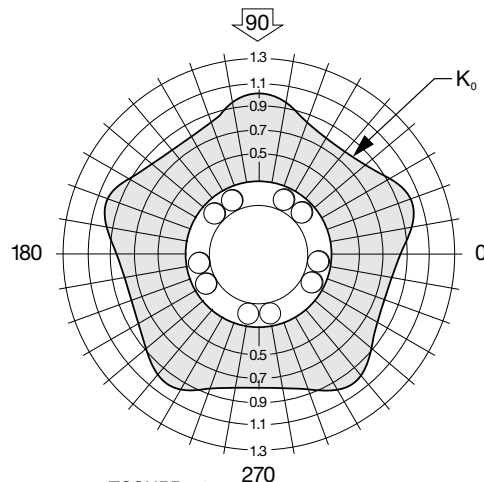
K_0 = the Load Correction Factor, which can be determined from the Polar Graph below.

Dynamic Load Capacity Correction Factor, K_0

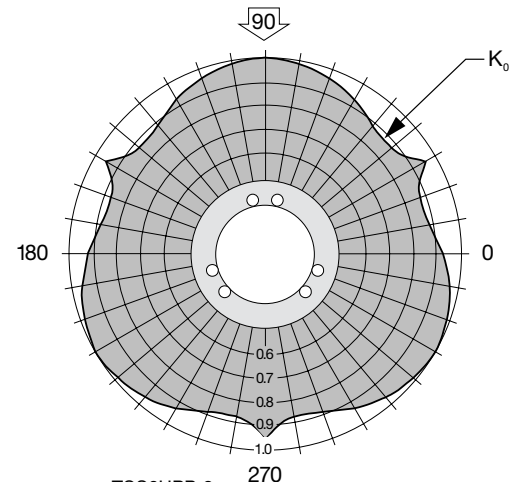
The Dynamic Load Capacity is based on a rated travel life of 2 million inches. The actual Dynamic Load Capacity can be affected by the orientation of the bearing or the direction of the applied load. For dynamic load Correction Factors, see polar graphs below.

Polar Graphs

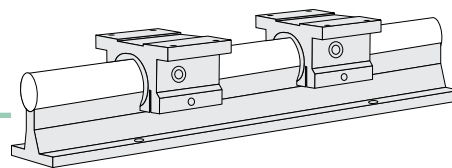
The actual Dynamic Load Capacity of a BALL BUSHING bearing is determined by the orientation of the bearing or direction of the applied load. The load Correction Factor K_0 is found by knowing the direction of the applied load relative to the orientation of the bearing's ball tracks and referring to the polar graph. To determine the actual Dynamic Load Capacity, multiply the proper Correction Factor by the Dynamic Load Capacity listed in the product table on the previous page.



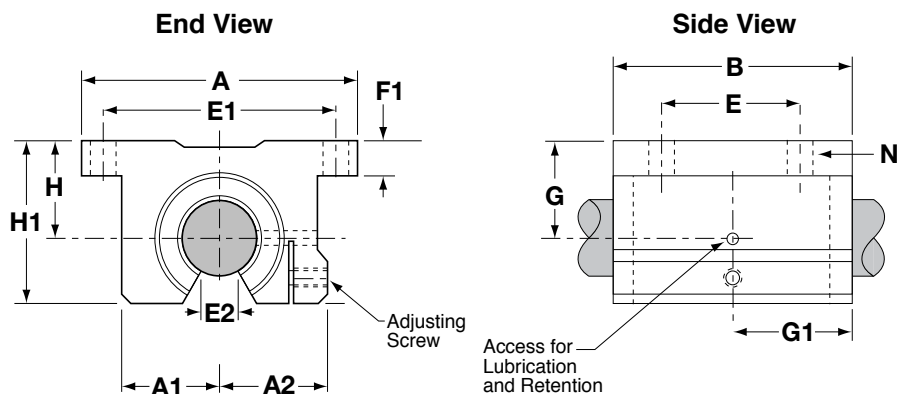
TSSUPB-10
TSSUPB-12
TSSUPB-16
TSSUPB-20
TSSUPB-24



TSS6UPB-8



Super Smart Ball Bushing™ Pillow Blocks (Open Type) for Continuously-Supported Applications



Super Smart Ball Bushing™ Pillow Blocks (Open Type) (Dimensions in inches)									
Catalog Number	Nominal Diameter	A	A1	A2	B	E ± .010	E1 ± .010	E2 Min.	F1
TSSUPBO-8	.500	2.00	.69	.75	1.50	1.000	1.688	.31	.25
TSSUPBO-10	.625	2.50	.88	.94	1.75	1.125	2.125	.34	.28
TSSUPBO-12	.750	2.75	.94	1.00	1.88	1.250	2.375	.41	.31
TSSUPBO-16	1.000	3.25	1.19	1.25	2.63	1.750	2.875	.53	.38
TSSUPBO-20	1.250	4.00	1.50	1.63	3.38	2.000	3.500	.62	.44
TSSUPBO-24	1.500	4.75	1.75	1.88	3.75	2.500	4.125	.74	.50

Catalog Number	G	G1	H ± .003	H1	N		Pillow Block Mass lb	Dynamic* Load Capacity lbf
					Hole	Bolt		
TSSUPBO-8	.69	.69	.687	1.13	.16	#6	.23	360
TSSUPBO-10	.88	.88	.875	1.44	.19	#8	.41	620
TSSUPBO-12	.94	.94	.937	1.56	.19	#8	.51	1130
TSSUPBO-16	1.19	1.32	1.187	2.00	.22	#10	1.03	1900
TSSUPBO-20	1.50	1.69	1.500	2.56	.22	#10	2.15	2350
TSSUPBO-24	1.75	1.88	1.750	2.94	.28	.25	3.29	3880

*See the chart on the bottom half of the next page.

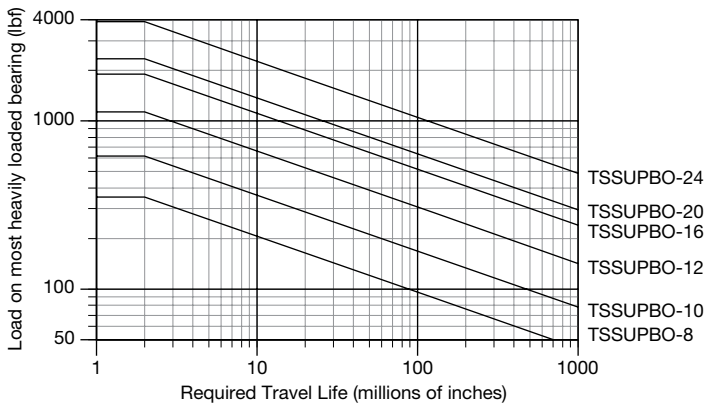
Continued on the next page

NOTE: Catalog number is for a standard item.
For other options, add: **CR** Corrosion-Resistant, **NB** Nylon Balls,
or **CM** Ceramic Balls to end of catalog number.

Super Smart Ball Bushing™ Pillow Blocks

(Open Type) for Continuously-Supported Applications

Load/Life Graph (Lines indicate limiting load for given BALL BUSHING Pillow Block)



Determining BALL BUSHING Bearing Size

To determine the proper BALL BUSHING bearing size, enter the chart with the maximum load of the most heavily loaded bearing and the required travel life. Mark where the two lines intersect. All BALL BUSHING bearing sizes that pass through or above and to the right of this point may be suitable for this application.

Note: For the purpose of using this chart:

$$\text{Load on Most Heavily Loaded Bearing} = \frac{\text{Maximum Applied Load}}{K_0}$$

where:

K_0 = the Load Correction Factor, which can be determined from the Polar Graph below.

Dynamic Load Capacity Correction Factor, K_0

The Dynamic Load Capacity is based on a rated travel life of 2 million inches. The actual Dynamic Load Capacity can be affected by the orientation of the bearing or the direction of the applied load. For dynamic load Correction Factors, see polar graphs below.

Polar Graphs

The actual Dynamic Load Capacity of a BALL BUSHING bearing is determined by the orientation of the bearing or the direction of the applied load. The load Correction Factor K_0 is found by knowing the direction of the applied load relative to the orientation of the bearing's ball tracks and referring to the polar graph. To determine the actual Dynamic Load Capacity, multiply the proper Correction Factor by the Dynamic Load Capacity listed in the product table on the previous page.

