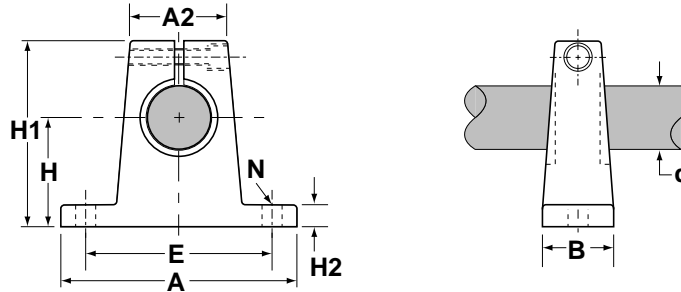


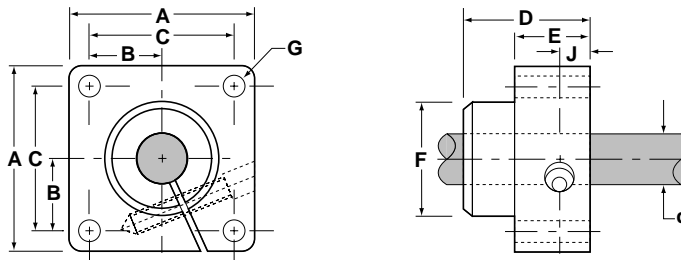


60 Case™ LinearRace™ Support Blocks for End-Supported Applications



Material: Malleable Iron for sizes .500 to 2.000 in.
Aluminum Alloy for sizes .250 and .375 in.

Type TSB 60 Case™ LinearRace™ End Support Blocks (Dimensions in inches)											
Catalog Number	Nominal LinearRace Dia. d	H ±.002	H1	H2	A	A2	B	E ±.010	N		Mass lb
									Hole	Bolt	
TSB-4	.250	.687	1.06	.25	1.50	.63	.50	1.125	.16	#6	.03
TSB-6	.375	.750	1.19	.25	1.63	.69	.56	1.250	.16	#6	.05
TSB-8	.500	1.000	1.63	.25	2.00	.75	.63	1.500	.19	#8	.30
TSB-10	.625	1.000	1.75	.31	2.50	.88	.69	1.875	.22	#10	.40
TSB-12	.750	1.250	2.13	.31	2.75	1.00	.75	2.000	.22	#10	.50
TSB-16	1.000	1.500	2.56	.38	3.25	1.38	1.00	2.500	.28	1/4	1.00
TSB-20	1.250	1.750	3.00	.44	4.00	1.75	1.13	3.000	.34	5/16	2.00
TSB-24	1.500	2.000	3.50	.50	4.75	2.00	1.25	3.500	.34	5/16	2.60
TSB-32	2.000	2.500	4.50	.63	6.00	2.63	1.50	4.500	.41	3/8	4.80



Material: Aluminum Alloy

Type TFSB Flanged 60 Case™ LinearRace™ End Supported Blocks (Dimensions in inches)											
Catalog Number	Nominal LinearRace Dia. d	A	B	C ±.010	D	E	F	G		J	Mass lb
								Hole	Bolt		
TFSB-8	.500	1.63	.81	1.250	.88	.50	1.00	.18	#8	.25	.3
TFSB-12	.750	2.38	1.19	1.750	1.00	.63	1.25	.21	#10	.31	.6
TFSB-16	1.000	2.75	1.38	2.125	1.25	.63	1.50	.27	1/4	.31	.8
TFSB-20	1.250	3.13	1.56	2.375	1.38	.75	1.75	.27	1/4	.38	.9